



The Nineteen Forty-Six Annual
of Bates College, Lewiston, Maine

MIRROR

Suzanne Davidson
Editor-in-chief

Mary Stanley
Business Manager

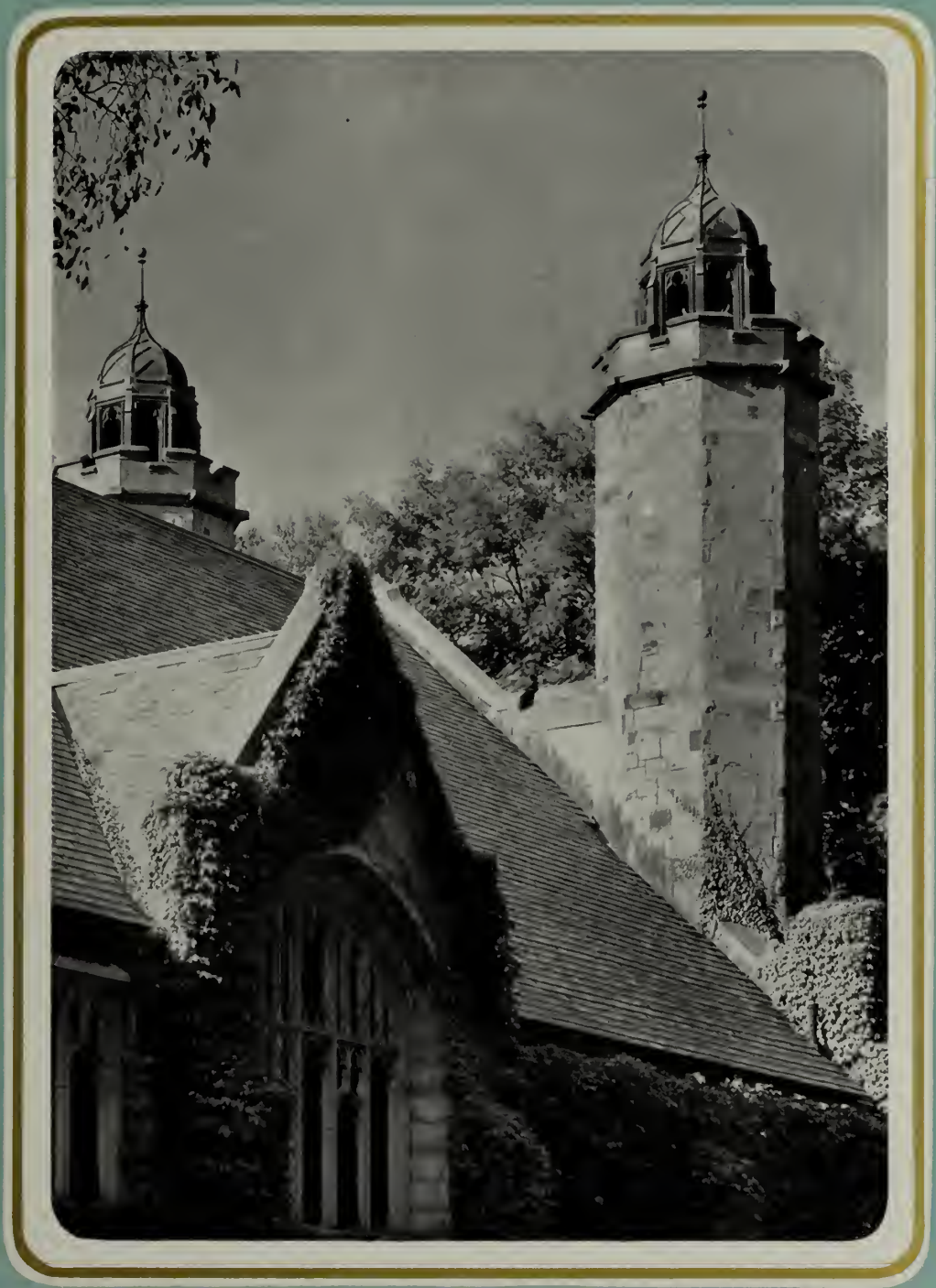


*T*o George Edwin Ramsdell, '03,
professor emeritus of mathematics.
For thirty-eight years, Professor
Ramsdell has been a devoted son of
Bates, symbolizing the Bates spirit
with his warm-hearted friendship
and sincere interest in his fellowmen.

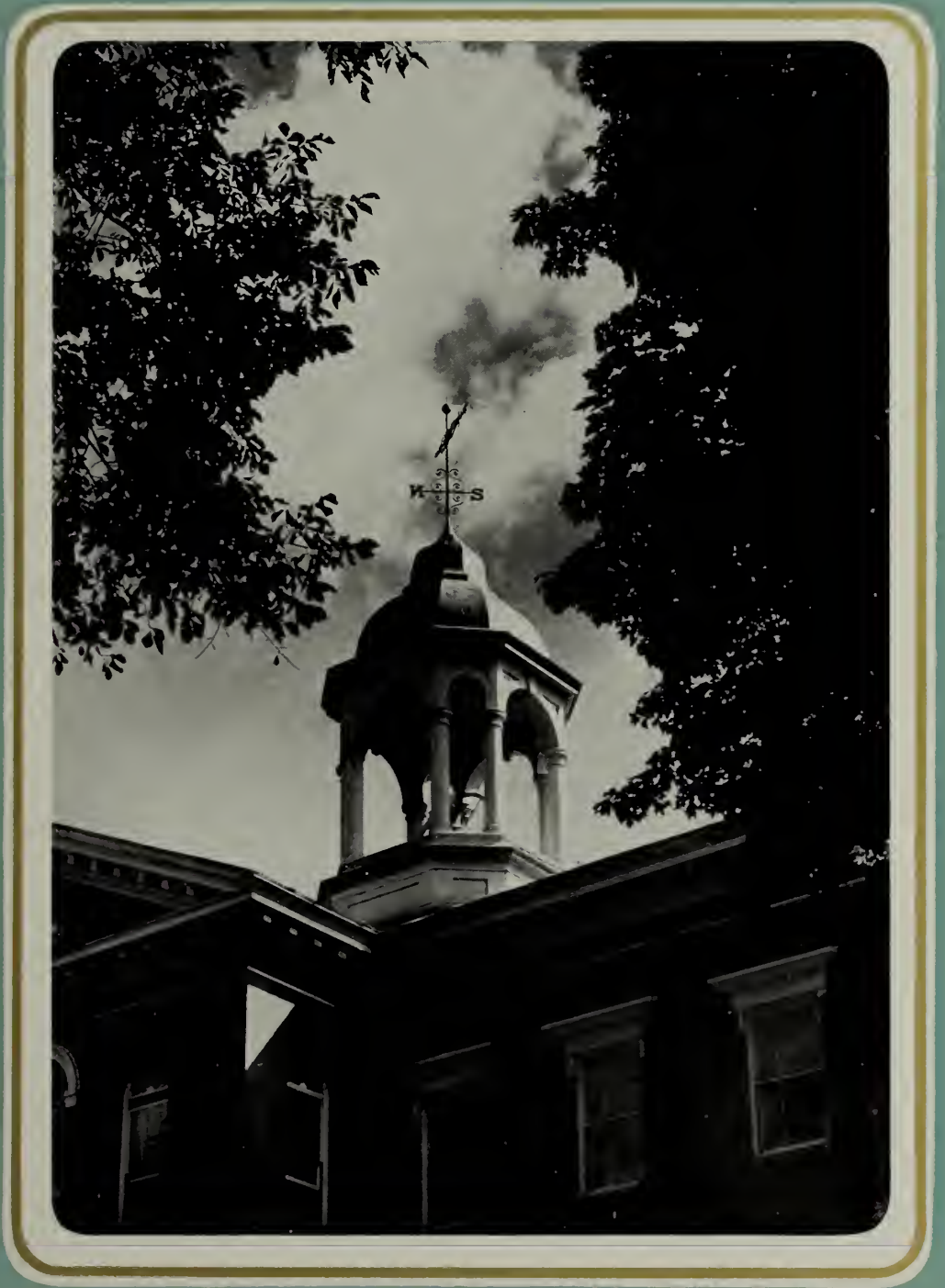
Dedication



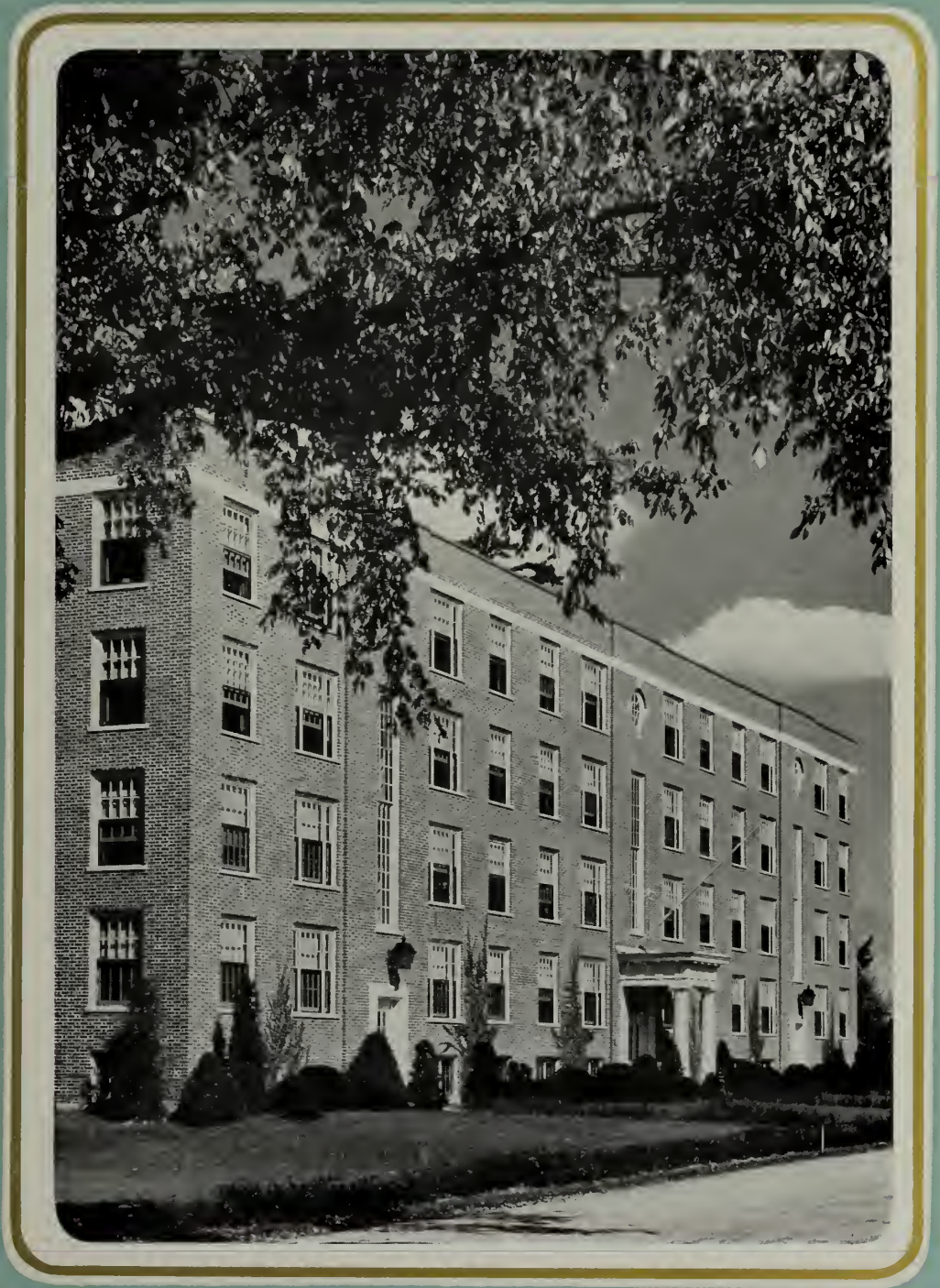
Chapel
Spires



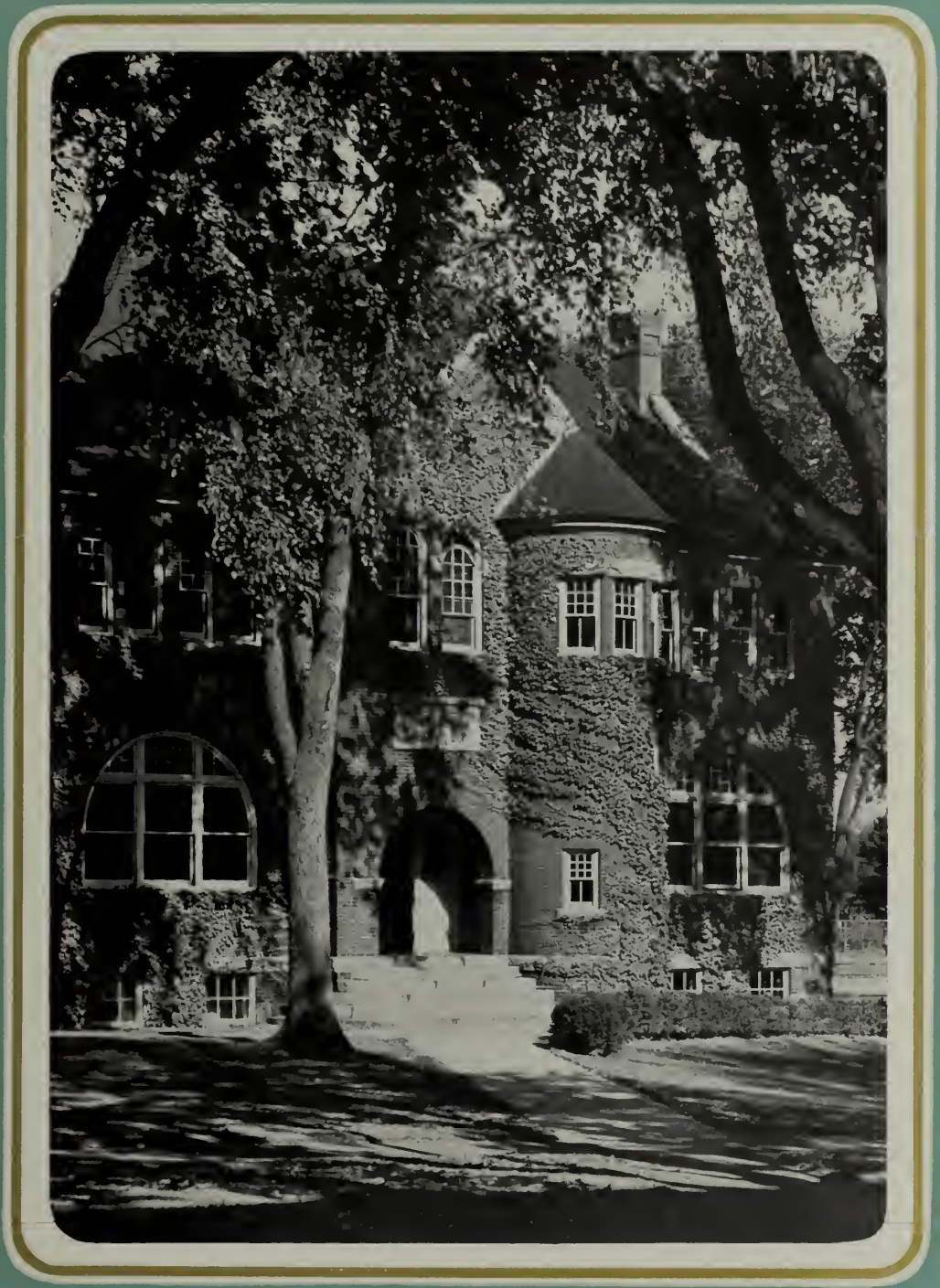
Hathorn
Tower

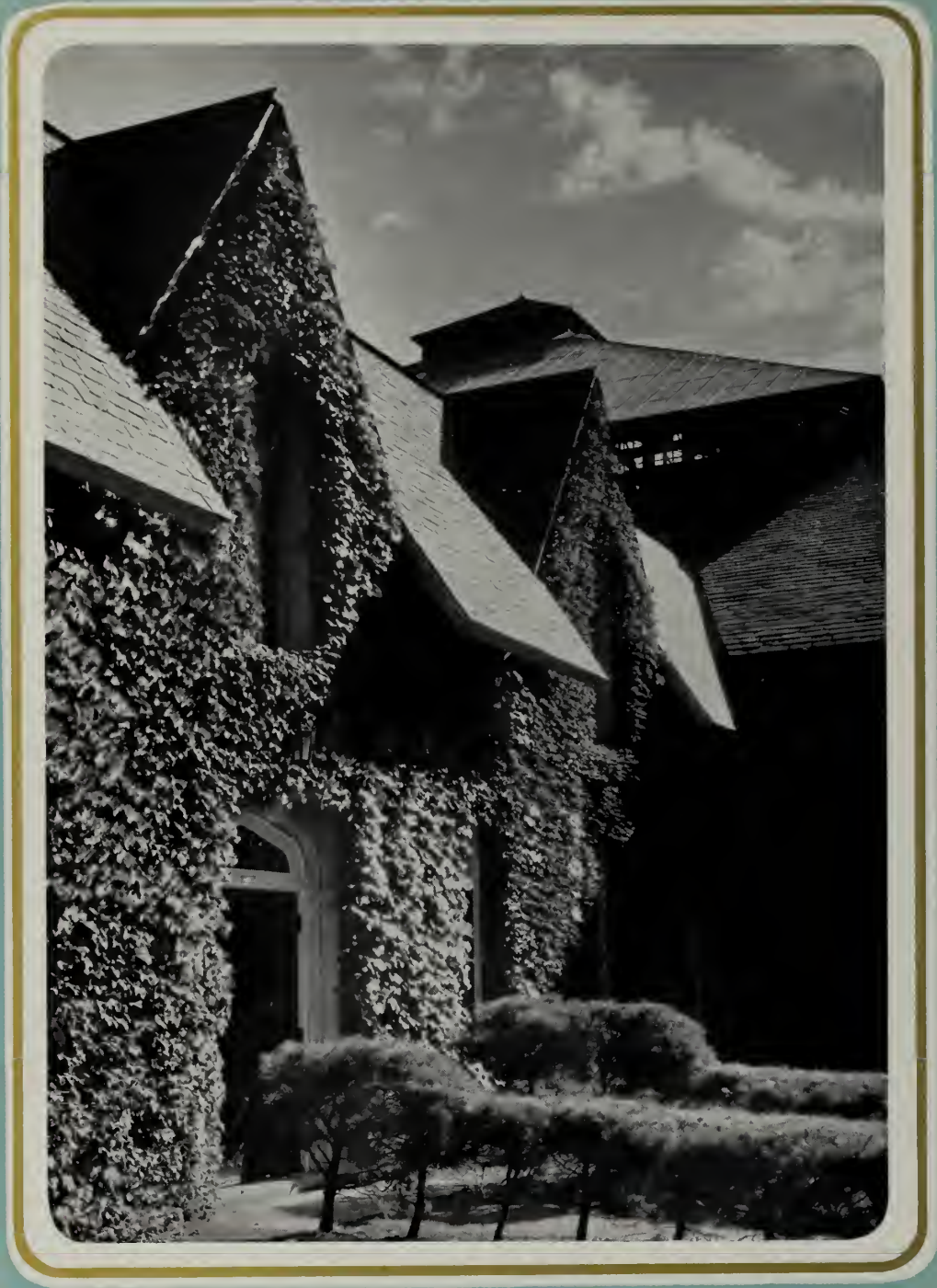


Smith Hall



Hedge
Laboratory







*Administration
and Faculty*



CHARLES FRANKLIN PHILLIPS, Ph.D., LL.D.
President



HARRY W. ROWE, A.M.
*Assistant to the President; Alumni
Secretary*



HAZEL M. CLARK, A.M.
*Dean of Women; Director of
Admissions for Women*



MILTON L. LINDHOLM, Ed.M.
Director of Admissions for Men



BAILEY



BARTLETT



BEAL



BERKELMAN

CARROLL P. BAILEY, M.S. . . . *Assistant Professor of Physics*

PAUL B. BARTLETT, A.M. . . . *Professor of Business Economics; Director of Placement*

PAULINE B. BEAL, A.B. . . . *Director of News Bureau; House Fellow*

ROBERT G. BERKELMAN, A.M. . *Professor of English*

ANGELO P. BERTOCCHI, A.M. . . *Professor of French*

AUGUST BUSCHMANN, A.M. . . *Assistant Professor of German*

MARY L. CARLSON, Ph.D. . . . *Instructor in Greek and Latin; House Fellow*

J. MURRAY CARROLL, A.M. . . . *Professor of Economics*



BERTOCCHI



BUSCHMANN



CARLSON



CARROLL



CRAFTS



D'ALFONZO



DURFEE



EATON

SELDON T. CRAFTS *Director of Music*

JOSEPH D'ALFONSO, Ph.D. *Instructor in Philosophy and Psychology*

MARY E. DURFEE, B.S. *Instructor in Hygiene and Physical Education for Women; House Fellow*

MABEL EATON, A.B., B.S. *Librarian*

LLOYD W. FISHER, Ph.D. *Professor of Geology*

OSSIP K. FLECHTHEIM, J.D. *Assistant Professor of History and Government*

IVA W. FOSTER, A.B., B.S. *Assistant Librarian*

LYDIA A. FRANK, A.M. *Instructor in Speech and Mathematics; House Fellow*



FISHER



FLECHTHEIM



FOSTER



FRANK



HARMS



HOVEY



INGLES



INGLES

SAMUEL F. HARMS, A.M.*Professor of German*

AMOS A. HOVEY, Ph.D.*Professor of History*

PRISCILLA M. INGLES, A.B., R.N. *Director of Nursing Education*

J. WESLEY INGLES, A.M.*Assistant Professor of English*

RAYMOND L. KENDALL, A.M. . . *Associate Professor of Educational Practice*

LAWRENCE D. KIMBALL, A.M. . . *Assistant Professor of French*

WALTER A. LAWRENCE, Ph.D. . . *Stanley Professor of Chemistry*

MABEL L. LIBBY, A.B. *Registrar*



KENDALL



KIMBALL



LAWRENCE



LIBBY



MABEE



MAC DONALD



MANSFIELD



MOORE

FRED C. MABEE, Ph.D. *Professor of Chemistry*

ROBERT A. F. MACDONALD, Ph.D. *Professor of Education; Secretary of the Faculty*

RICHARD L. MANSFIELD, A.M. . *Instructor in Psychology*

ERNEST M. MOORE, A.B. *Director of Physical Education for Men*

ANDERS M. MYHRMAN, Ph.D. . *Professor of Sociology*

MILDRED B. MYHRMAN, M.S. . *Instructor in Sociology*

MARTHA E. MYRICK, B.S. *Assistant in Hygiene and Physical Education for Women; House Fellow*

FRED E. POMEROY, A.M., Sc.D. . *Professor of Biology*



MYHRMAN



MYHRMAN



MYRICK



POMEROY



POND



QUIMBY



ROSS



SAMPSON

RAYMOND W. POND, A.B. *Instructor in Physical Education for Men
Head Coach of Football and Baseball;*

BROOKS QUIMBY, Ed.M. *Professor of Argumentation and Speech*

NORMAN E. ROSS, B.S. *Bursar*

CHARLES H. SAMPSON, Ed.M. . . *Professor of Engineering Drawing and
Descriptive Geometry; Administrative Assistant*

WILLIAM H. SAWYER, Ph.D. . . . *Professor of Botany*

MIRIAM L. SCHAEFFER, A.M. . . . *Assistant Professor of Speech*

ROBERT D. SEWARD, A.M. *Assistant Professor of Spanish and French*

LESLIE SPINKS, A.M. *Assistant Professor of Physical Education for Men*



SAWYER



SCHAEFFER



SEWARD



SPINKS



SWEET



THOMAS



THOMPSON



WALMSLEY

PAUL R. SWEET, Ph.D. *Assistant Professor of History*

WILLIAM B. THOMAS, Ph.D. . . . *Assistant Professor of Chemistry*

C. RAY THOMPSON, A.B. *Instructor in Hygiene and Physical Education for Men;
Head Coach of Track*

LENA WALMSLEY, A.M. *Professor of Hygiene and Physical Education for
Women; House Fellow*

G. PAUL WHITBECK, A.M. *Professor of English*

PERCY D. WILKINS, M.S. *Professor of Mathematics*

KARL S. WOODCOCK, Ph.D. *Professor of Physics*

EDWIN M. WRIGHT, Ph.D. *Professor of English*



WHITBECK



WILKINS



WOODCOCK



WRIGHT



ZERBY

RAYBORN L. ZERBY, Ph.D.
Professor of Religion; Director of the Chapel

CLIFTON D. GRAY, Ph.D., LL.D., L.H.D.
President Emeritus

ELEANOR H. MORSE, B.C.S.
Instructor in Stenography and Typewriting

R. R. N. GOULD, A.M.
Professor Emeritus of Government

FRED A. KNAPP, A.M.
Professor Emeritus of Latin

ARTHUR N. LEONARD, Ph.D.
Professor Emeritus of German

GROSVENOR M. ROBINSON, D.Sc.O.
Professor Emeritus of Public Speaking

WILLIAM R. WHITEHORNE, Ph.D.
Professor Emeritus of Physics

ROBERT E. MCGEE, B.A. (Oxon.)
Assistant Professor of English

ROBERT A. WINTERS, A.M.
Instructor of Economics

GEORGE E. RAMSDALL, A.M.
Professor Emeritus of Mathematics

JOSEPH E. LEMASTER, A.B.
Instructor in History



Seniors

CLASS HISTORY OF 1946

We're the War Babes, the class of '46. We were the last class to enter when Bates was still a civilian college; we were here during the "war years," when it was blue jackets and hup-two-three instead of slouch coats, heavy shirts; and we were here in the first post-war year, when reconversion set in and the steady trickle of former Bates men and incoming freshmen has continued into a river.

Yes, it was September 21, 1942, that we entered, almost 200 strong. IMUR . . . the agonies of the Faculty Reception . . . Personality tests (are you afraid of high places?) . . . Stanton Ride, with the bees, the stop in front of the grave of the frustrated female (who didn't go to Bates), the cider and donuts. Freshman week over, we started classes and Freshman Rules. Three little words—that's all we lived for; bibs and bows, caps and bow ties; the Unholy Thirteen—remember Don Richter's scalping, and who was that worshipper of Allah kneeling outside the Chapel? Saturday Night Dances, with the Bobcats and Sis entress ("Embrace me, my sweet Embraceable You"). Freshman Discussion Groups, Mothers Weekend, Jeffrey Lynn and the measles. Bill Ginn was president, Muriel Ulrich vice-president, with Sue Davidson as secretary and George Stewart treasurer. There was a sadder side too, for every week fellows left for camps, and the service flag went up in the Chancel of the Chapel.

It was a civilian year overlaid with patches of war. We had seventeen days at Christmas and got out the middle of May. Mert Sanborne was our first class casualty. The first group of accelerating freshmen entered in the spring semester. The Navy first came that summer of '43, while many of our class took advantage of summer school.

We returned that fall to a Navy-Bates campus. We got used to the undress blues, the ten o'clock curfew for men, Navy lingo—hit the sack, chow, scuttlebutts, regimentals. Bob Dennett, Les Anderson, Art Ploener, Don Richter, Bob Rudolph, Bob Lindh now functioned in Navy blues. Chase Hall Open Houses and Navy Smokers were inaugurated. The V-12 Octet had its beginning. Then came the Soph Hop, Carnival, tea dances, Ivy Hop, and 11:15's on Saturday night were extended to 12 o'clock pers, while our sailor escorts flew across campus on their "last minute dash before taps." Class officers were Bud Ireland, Muriel Ulrich, Sue Davidson, and Alden Sears, BASC. We got used to cold Maine winters, earlier breakfasts, chilly May Day breakfast, the nightmares of exams. Diamonds for Fran Dean, Holly Hawkes, Nonnie Preble. Winnie Poole, Ruth Nickerson, Joannie Merritt. Thanksgiving, New Year's at Bates with classes as usual—what are holidays for, anyway? We only had brief glimpses of home during short vacations, and the year ended in the middle of June.

Prexy Gray retired and President Charles F. Phillips took over the helm with a new Bates

Plan in the offing. Bates ran on a year-round schedule calculated to graduate a student in two and two-thirds years. The *Squall*, rampant with humor, was born that summer, and in the fall the *Student* resumed publication on a bi-monthly basis.

The rest of the Jolly Jolly Juniors returned in November, many of us well-versed in factory lingo. Social events got into full swing with Cabin parties, open houses at Thorncrag, basketball games, Smokers, and Navy Formals—the Christmas one was the most beautiful in years. Christmas was a weekend holiday—remember those crowded late trains? Motif for Carnival was the circus, and the snow sculptures were *terrific!* Class officers were Schmanska as president, Ruth Asker, vice-president, Sue Davidson, secretary, and Pat Wilson as treasurer. News of Roosevelt's death shook the campus, bringing the war even closer to us. V-E Day came May 6 while the flag was still at half-mast. That was the year that spring came and went. Engagements included Betty Kimball, Penny Gump-right, Ruth Small, Silvia Grey, and Jerry Walther, all to Bates men. Joannie and Bud got married in the Bates Chapel early in June. Ivy Day, and we tried the feel of the cap and gown . . . the Ivy Hop . . . exams . . . and another year was over.

Our war years were nearing to an end. V-J Day and peace at last. That summer was our farewell to the Navy at Bates, and the garnet once more became the predominant color. Civilians, veterans came in ever increasing numbers; former Bates men from the original class of '46 were back—George Disnard, Shorty Fleicher, Bill Ginn (and wife), Bill Fee, Bob Rudolph. For the first time in many years there was no football team, but basketball got rapidly underway. Winnie Poole Sherman back on campus, mixing college and marriage; engagements came thickly: Pril, Bunny, Marty, Mac MacMackin, Erma Rowe, Kay Reilly, Ruth Asker, Ginny O'Brien, Scottie Miller, Dottie Lichter. Marriages: Billie Greenburg Diamond, Nonnie Preble Eldridge, Betty Kimball Howard, Teddy Holmes Knights, Jerry Walther Keach.

New Dorm, now Smith Hall, was opened up for the surplus women and social activities slowly went back to pre-war days, but what can a gal do when there are 500 odd girls to 150 fellows? The Christmas formal and Carnival Hop were fun, with numbers of former V-12ers and old Bates men on campus for the weekend. Ruth Stillman was our lovely Queen: Sue Davidson, Ruth Asker, Pat Wilson, Marty Cloutier, Jay Packard and Muriel Stewart formed her court. In February we held the first Pops Concert since 1942.

We're the Class of '46, the class of the War Years; our days at Bates have been full of fun, hard work, wonderful friendships, disappointments perhaps, but crammed with glorious memories.

SENIOR OFFICERS

PAUL SCHMANSKA
President

RUTH SMALL
Vice-President

PATRICIA WILSON
Treasurer

MURIEL STEWART
Secretary

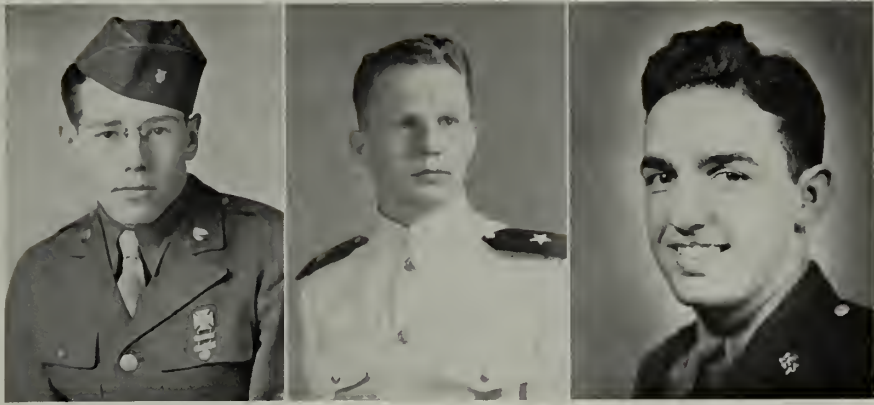
PHI BETA KAPPA

Myrtle E. Holden
Geraldine M. Weed
Mary F. Langille

Vera J. Cleland
Barbara R. Miller
Electra Zazopoulos



David T. Brigham
Cum Laude in Economics



HOWARD CLARKSON

MYRTON SANBORN

STANLEY KEENE

In Memoriam



HOWARD CLARKSON

STANLEY L. KEENE

MYRTON SANBORN

I am the resurrection and the life: he that believeth in
me, though he were dead, yet shall he live;

And whosoever liveth and believeth in me shall never die.

St. John II:25-26

SALLY ANN ADKINS

Andover, Mass.

Major in English; C. A. Religion Commission 1, Publicity Commission 2, Reconstruction Commission 3, Public Affairs Commission 4; Student Staff 1, 2, Associate Editor 3; Heelers 1, 2; Speaker's Bureau 1; W. A. A. Letter 2; Spofford Club 3, 4; MIRROR Staff 3, 4; Betty Bates Booklet Staff 3; Ivy Hop Committee 3; Garnet Staff 4; Bates Key Scholarship 4.



RUTH E. ASKER

Westbrook, Maine

Major in English; C. A. Freshman Cabinet 1, Deputations Commission 1, C. A. Community Service Commission 2, 3, Freshman Discussion Group Leader 4; Choir 1; MacFarlane Club 1; W. A. A. Numerals 2, Sweater 3; Stu. G., Sophomore Representative 2, Vice-President 3, Senior Advisor 4; Dance Club 2, 3, 4; Carillon 2, Director 3, 4; Chase Hall Committee 2; Class Vice-President 3; Proctor 3, 4; Bates Key Scholarship 4; Bates Conference Committee, Secretary 4; Carnival Queen's Court 4.



MILDRED E. BARTLETT

Worthington, Mass.

Major in English





MARCEL R. BOUCHER

Auburn, Maine

Major in French; Swimming Team 1, Track Team 1, 2, 3, 4; Pole-Vault; University of Maine Cross Country Team 1; La Petite Academie 1, 2, 3, 4; Off-Campus Club 1, 2, 3.



DAVID T. BRIGHAM

Worcester, Mass.

Major in Economics; C. A. Reconstruction Commission 1, 3; Freshman Debate Team; Varsity Debating 2, 4; Outing Club Council 2; Dean's List 2, 3, 4; Ivy Hop Committee 3; Outing Club Board of Directors 3, 4; Assistant in Economics 3, 4; MIRROR Staff 4; Student Council, President 4; Bates Conference Committee 4; Cum Laude in Economics.



BARBARA E. BROWN

Goffstown, N. H.

Major in Sociology; C. A. Reconstruction Commission 1; C. A. Community Service Commission 2, 3, 4; W. A. A. Numerals 1, Junior Board 2; Dance Club 2; House Council 2; Proctor 3; Heelers 4; Student Government Board 3.

IONA CARTER

Somers, Conn.

Major in Sociology



V. JOYCE CLELAND

Mt. Vernon, N. Y.

Major in French; Dean's List 1, 2, 3, 4; Choir 1, 2, 3; Scholarship Prize 1, 2, 3, 4; C. A. Reconstruction Commission 1; Heelers 1; W. A. A. Numerals 2; W. A. A., Secretary 2, President of Summer Board 3, Undergraduate Representative 4; La Petite Academie 2, Secretary-Treasurer 3; Training 1, 2; Phi Sigma Iota 3, 4; Basketball Manager (W. A. A.) 3, Team 2, 4, W. A. A. Sweater 3; College Representative at Herald Tribune Forum on Current Affairs 4; Phi Beta Kappa.



MARTHA ANNE CLOUTIER

Augusta, Maine

Major in Biology; C. A. Campus Service Commission 3, 4; Modern Dance Club 3, 4; Heelers 3, 4; Carnival Queen's Court 4.





BARBARA COSGROVE

Malden, Mass.

Major in Sociology; C. A. Community Service Commission 2; House Council 2, 3; Student, Advertising Staff 3, 4; C. A. Deputations Commission.



SUZANNE H. DAVIDSON

Drexel Hill, Pa.

Major in Sociology; Editor-in-Chief of the MIRROR 4; Class Secretary 1, 2, 3; B. C. A. Freshman Cabinet 1; Tea Dance Committee 1, 2; C. A. Cabinet 4; W. A. A. Training 1, 2, 3; Maine Area Conference, C. A. 2; B. C. A. Social Commission 1, 2, 3; W. A. A. Numerals 2; Christmas Hop Committee 2; Freshman Dance Class 2, 3; Chairman of Ivy Hop 3; Chase Hall Dance Committee 4; Politics Club 4; Chairman of C. A. Publicity Commission 4; Winter Carnival, Queen's Court 4.



DONALD S. DAY

Auburn, Maine

Major in Economics; Freshman Debating Squad 1; Student Staff 1; Winning Team, Freshman Prize Debates 1; Heelers 1; Business Manager, C. A. Handbook 2; Politics Club 2; Varsity Debating Squad 2, 3, 4; Golf Team 3; Speaker's Bureau 3, 4; Junior-Senior Prize Speaking Contest 4.

FRANCES V. DEAN

Maplewood, N. J.

Major in Sociology; B. C. A. Freshman Commission 1, 2, 3, 4; Orphic Orchestra 1, 2, 3, 4; Student Staff 1, 2, Associate Editor 3; Outing Club Council 2, Director 3, 4; W. A. A. Numerals 2; Apprentice Dance Group 2, 3; Chase Hall Dance Committee 3, 4; Publishing Association, Secretary 4; Assistant in Religion 4; Winter Carnival Queen's Committee 4; Ivy Day Committee 3; Training 1, 2, 3.



BEULA G. DIAMOND

Jamaica, N. Y.

Major in Sociology; C. A. Campus Service Commission 2; MacFarlane Club 2, 4; B. A. S. C. 2; Student Government 3; Chase Hall Committee 4.



FRANCES P. DONOVAN

Lewiston, Maine

Major in History, Government; Lambda Alpha 1, 2, 3, 4; Lambda Alpha Council Member 4; Heelers 1, 2; Politics Club 3, 4, Vice-President 4; Reconstruction Commission 1; Library-Commons Fund-Student Committee.





ELEANOR P. ELDRIDGE

Pittsfield, Mass.

Major in Psychology; Freshman Cabinet 1; Freshman Commission 1, 2, 3; Women's Student Government 2, 3; Sophomore Representative 2; Proctor 3; Organizer and Chairman of B. A. S. C. 2, 3.



FERN F. FARQUHAR

Randolph, Mass.

Major in Psychology and Sociology; C. A. Campus Service Commission 2; MacFarlane Club 2; Bobcats 2; C. A. Community Service Commission 3; C. A. Religious Commission 4; Philosophy Club 4.



GLORIA D. FINELLI

Newtonville, Mass.

Major in Sociology; C. A. Deputations Commission 1, Reconstruction Commission 2, 3; Politics Club 2, 3; Student Staff 2, 3, Associate Editor 4; Dean's List 2; Heelers 3, 4.

CYRIL V. FINNEGAN

South Berwick, Maine

Major in Biology.



ELEANOR M. FROST

Major in Sociology; MacFarlane Club 1, 2, 4. Secretary-Treasurer 3; C. A. Community Service Commission 1, 2, 3, 4; Dance Club 1, 2, Secretary-Treasurer 3. President 4; W. A. A. Numerals 2; Proctor 3, 4; Bates Key Scholarship 4.



RUTH GARLAND

Oak Bluffs, Mass.

Major in History and Government; Heelers 1, 2, 3, 4; C. A. Reconstruction Commission 1, 2; Politics Club 2, 3; Student Staff 3.





ALBERT D. GENETTI

Bedford, Mass.

Major in Physics; Baseball Numerals 1; Baseball Letters 2, 3; Jordan Scientific Society 2, 3, 4; Proctor 3, 4; Varsity Club 3.



JANE F. GUMPRIGHT

Abington, Mass.

Major in English; C. A. Religion Commission 1, 2; Student Board 2; Dean's List 2, 4; Training 2, 3; Healers 3, 4, Play "Soldier's Wife" 4; Proctor 3, 4; House Council 3, 4; Assistant in English 3; Student Government, Secretary-Treasurer 4; Student Activities Committee 4; Phi Sigma Iota 4; Spofford Club 4; MIRROR Staff 4; Pygmalion.



CHARLES G. HAMLIN

Bethel, Maine

Major in English; Track Numerals 1; Track 1, 2, 3; Spofford Club 4.

SHIRLEY E. HICKS

Brimfield, Mass.

Major in Sociology; C. A. Community Service Commission 1, 2, 3; C. A. Campus Service Commission 4; Politics Club 3, 4; Student Board 3, 4; C. A. Cabinet 4.



LOUIS J. HERVEY

Taunton, Mass.

Major in English; Football Numerals 1; Basketball Numerals 1, 4; Baseball, Varsity Letter 1, 2, 3, 4; Football, Varsity Letter 2, 3; Varsity Club 2, 3; Freshman Proctor 2, 3; Student Council 3.



CHARLOTTE H. HAWKES

Holden, Mass.

Major in English; Choir 1, 2, 3; Choral Society 1, 2, 3; C. A. Religion Commission 1, 2, 3, Chairman 4; C. A. Cabinet 4; MacFarlane Club 2, 3; Carillon 2, 3, 4; Christian Service Club 4.





MYRTLE E. HOLDEN

Esmond, R. I.

Major in History and Government; Student Staff 1, Managing Editor 2, Editor-in-Chief 3, 4; C. A. Reconstruction Commission 1, 2, 3; Politics Club 2, 3, 4; Philosophy Club 3, Vice-Chairman 4; Dean's List 2, 3, 4; Assistant in History and Government 3, 4; Ivy Day Committee 3; Phi Beta Kappa; Honors Candidate 4.



MARY A. HOYT

Lewiston, Maine

Major in English; C. A. Campus Service Commission 1, 2; Lambda Alpha 1, 2, 3, 4.



ELIZABETH J. HUTCHINS

Bucksport, Maine

Major in English; Orphic 1, 2, 3; Reconstruction Commission 1, 2; Babettes Orchestra 2; MacFarlane Club 2; Campus Service Commission 3; MIRROR Staff 3; Social Commission 4; Student Staff 4; House Council 4.

HAROLD HURWITZ

New York, N. Y.

Major in Sociology; Heelers 1, 2; Robinson Players 1, 2, 3; Spofford Club 1, 2, 3, 4; C. A. Freshman Cabinet 1; War Service and Reconstruction Commission 1, 2, 3, Co-Chairman Reconstruction Commission 3; Garnet Staff 1, 2, 3, 4, Associate Editor of Garnet 3, 4; Junior Prize Speaking Contest 3, Second Place; Graduate Cum Laude.



ROHNA A. ISAACSON

Lewiston, Maine

Major in Sociology; Lambda Alpha 1, 2, 3, 4; Student Staff 1; Reconstruction Commission 3; Politics Club 3, 4, Secretary-Treasurer 4.



MARJORIE W. KEACH

Westfield, N. J.

Major in Psychology, Sociology; C. A. Freshman Cabinet 1; Student Government 2; Campus Service Commission 1, 2, 3, 4; W. A. A. Numerals 3.





JUNE E. KLANE

Malden, Mass.

Major in Sociology; C. A. Campus Service Commission 1, 2, 3, 4; Student Staff 1, 2, 3, 4; Choir 2; Apprentice Dance Club 2, 4; Politics Club 3, 4; W. A. A. Awards Committee 3.



CONSTANCE A. LANE

Portland, Maine

Major in Chemistry; C. A. Deputations Commission 1, 2, Campus Service Commission 3, Religion Commission 4; Assistant in Chemistry 2, 3, 4; Lawrence Chemical Society 2, 3, 4; W. A. A. Numerals 3; Red Cross Swimming Instructor 3.



MARY F. LANGILLE

Swampscott, Mass.

Major in French; C. A. Campus Service Commission 1, 2, 4; Dean's List 2, 3, 4; La Petite Academie 2, Vice-President 3, President 4; Choral Society 3, 4; House Council 2; C. A. Community Service Commission 3; Choir 3, 4; Phi Sigma Iota 3, 4; Assistant in French 4; Phi Beta Kappa.

GEORGE A. LARCHIAN

Lewiston, Maine

Major in Chemistry and Math; Laurance Chemical Society 2, 3.



DORIS J. LEAVITT

Manchester, N. H.

Major in Mathematics; W. A. A. Training 1, 2, Numerals 3; C. A. Campus Service Commission 1, 2, 3, 4; House Council 2, 3; W. A. A. Junior Board 2; Jordan-Ramsdell Scientific Society 2, 3, Secretary-Treasurer 4; Manager W. A. A. Junior Basketball Team 3; Proctor 3.



DOROTHY S. LICHTER

Cambridge, Mass.

Major in Sociology; C. A. Social Commission 1, 2, 4; C. A. Campus Commission 3; Politics Club 2, 4; MacFarlane Club 3; Philosophy Club 3, 4.





ALICE GATES MacDONALD

Bangor, Maine

Major in English; Heelers 1, 2, 3, 4, President 4; Robinson Players 3, 4; Garnet Staff 3, Poetry Editor and Advisor 4; MIRROR Staff 3; Dance Club 2, 3, 4; Dean's List 1, 2, 3, 4; English Assistant 3; Student Government 3, 4, Proctor 3; Senior Advisor 4; B. A. S. C. 3; Choral Society 3, 4; "Who's Who in American Colleges and Universities" 4; Junior-Senior Prize Speaking Contest 3, 4; Class Treasurer 3, 4; Class Vice-President 1; Chase Hall Committee 3; Carillon 2, 3, 4; Peace Commission Study Group 2; Outing Club Junior Body 2, 3; Chairman Easter Formal Dance Committee 3; Ivy Day Chairman 3; Politics Club 3; Poetry Club 3; Classical Hour Club 2, 3, President.



PAULINE O. MacMACKIN

Andover, Mass.

Major in Biology; W. A. A. House Representative 1; Basketball 1, 3, 4; Numerals W. A. A. 1; Outing Club Council 2, 3; W. A. A. Board; House Council 2, 4; Softball 2; Sweater W. A. A. 2; Assistant in Biology 2, 3, 4; Cheerleader 2; Social Commission 3; Carnival Hop Co-Chairman 3; Carnival Co-Chairman 4; Outing Club Director 4; Jordan-Ramsdell Scientific Association 4.



CHARLES H. MARR

Barrington, R. I.

Major in Economics; Band 1, 2, 3; Mayor of College 2; Politics Club 2, 3; Outing Club, Junior Board 3.

DONALD E. MARR

Barrington, R. I.

Major in Economics; Band 1, 2, 3; Mayor of College 2; Politics Club 2, 3; Outing Club, Junior Board 3.



MARILYN J. MEYER

Worcester, Mass.

Major in Geology; Student 1, 3; C. A. Community Service Commission 1; C. A. Deputations Commission 2; C. A. Public Affairs Commission 4; Dance Club 2, 3; W. A. A. Numerals; Assistant in Geology 3, 4; Dean's List 2, 3, 4; Jordan-Ramsdell Scientific Society 4; House Council 4.



BARBARA R. MILLER

Worcester, Mass.

Major in Chemistry; Freshman Debating Squad 1; Heelers 1, 2; Freshman Prize Debate—Almon Cyrus Libby Debating Prize; C. A. Deputations Commission 1; General Scholarship Prize 1; Alice Jane Dinsmore English Prize 1; Varsity Debate Squad 2, 3, 4; Debating Council 2, 3, 4; Sophomore Prize Debate—Almon Cyrus Libby Debating Prize; C. A. Social Commission 2; Lawrence Chemical Society 2, 3, 4; Assistant in Chemistry 2, 3, 4; Delta Sigma Rho 3, 4; W. A. A. Numerals; Phi Beta Kappa.





ELIZABETH M. MORSE

Saco, Maine

Major in Mathematics; C. A. Religious Commission 1, 2, 4; Sodalitas Latina 2, 3, 4; Dean's List 2; C. A. Deputations Commission 3; Jordan-Rausdell Scientific Society 3, 4; Assistant in Latin.



JANE F. NELSON

Manchester, N. H.

Major in Physics; Student 1, 4; C. A. Social Commission 1, 3, 4; W. A. A. Training 1, 2, 3, 4; C. A. Community Service Commission 2; Rausdell Scientific Society 2, 3, President 4; Choir 2; W. A. A. Numerals 3; Assistant in Physics 3, 4; W. A. A. Sweater 4.



GERALDINE R. NICKERSON

Bath, Maine

Major in English; Choir 1, 2, 3, 4; Community Service 1, 4; Orphic 1; Deputations Commission 2, 3; House Council 2, 4; MIRROR Staff 3; Spofford 4; Heelers 4.

VIRGINIA M. O'BRIEN

Great Neck, Long Island, N. Y.

Major in Latin; C. A. Campus Service Commission 1, 2, 3, 4; House Council 1, 2, 3; Choral Speaking 1; Latin Club 2. Vice-President 3. President 4; Proctor 3; Student Government, Secretary-Treasurer 4.



BARBARA J. O'CONNELL

West Roxbury, Mass.

Major in Sociology; C. A. Campus Service Commission 1, 2, 3, 4; Student Staff 2, 3; W. A. A. Numerals 3; Heelers 4; Politics Club 4.



JEANNETTE L. PACKARD

North Amherst, Mass.

Major in Sociology; C. A. Community Service Commission 1, 2, 3; W. A. A. Junior Board 2, Numerals 2, Bracelet 2; Politics Club 3, 4; W. A. A. Board 3, 4, Sweater 3; W. A. A. Publicity Manager 4; Proctor 4; Outing Club Council 4; Carnival Committee 4; Carnival Queen's Court 4; Dean's List 4; W. A. A. Handbook 3.





JANE V. PARSONS

Auburn, Maine

Major in Economics; Lambda Alpha 1, 2; C. A. Publicity Commission 1; La Petite Academie 2, 3; C. A. Reconstruction Commission 3; C. A. Religious Commission 4; Politics Club 4; Assistant in Economics 4.



AGNES L. PATTISON

Marblehead, Mass.

Major in Psychology; Community Service Commission 2; Student 2; Philosophy Club 3, 4; President 3.



DOROTHY J. PETRIE

Lewiston, Maine

Spofford Club 1, 2, Secretary-Treasurer 3, President 4; Garnet 1, 2, Associate Editor 3, 4; Lambda Alpha 1, 2, 3, 4; C. A. Reconstruction Commission 1, 2, 3, 4; Student Board 2, Associate Editor 3, 4; Poetry Clinic 1, 2; General Scholarship Prize 1; Atlantic Monthly Contest Honorable Mention 3; Garnet Essay Contest Prize 3; Philosophy Club 4.

ROULA A. PETROPULOS

Lewiston, Maine

Major in Sociology; Lambda Alpha 1, 2, 3, 4; Phil-Hellenic Club 1, 2, 3, 4; Latin Club 4.



HELEN C. PRATT

Freeport, Maine

Major in Sociology; Dean's List 1, 2, 3; Student 3, 4; C. A. Campus Service Commission 3; C. A. Community Service Commission 4; Politics Club 3, 4; Philosophy Club 4.



KATHLEEN D. REILLY

Norwalk, Conn.

Major in English; Class Secretary 1, 3; Heelers 1; Dean's List 1; Garnet Staff 2, Editor 3, Associate Editor 4; Spofford Club 2, 4, Secretary 3; Play, "Cradle Song" 2; Christmas Nativity Play 3; Robinson Players 4; Play, "As You Like It," 4; Assistant Director, Play, "Soldier's Wife," 4.





VIRGINIA RICE

Fitzwilliam, N. H.

Major in Sociology; C. A. Social Commission 1, Freshman Commission 2, 3, 4; W. A. A. Numerals 1, Sweater 3; W. A. A. Board 1, 2, Vice-President 3; Proctor 3; Outing Club Council 3, Director 4.



ERMA N. ROWE

Minot Corner, Maine

Major in Mathematics; Lambda Alpha 1, 3, Secretary 2, President 4; Modern Dance Club 2, 3, 4; Jordan-Ramsdell Scientific Society 3, 4; Bates Directory Committee Chairman 4; Student Government 4.



MARION E. RYON

Stonington, Conn.

Major in English; C. A. Deputations Commission 1, 2, Publicity Commission 1, 2, 3; Heelers 1, 2, 3; Robinson Players 3, President 4; Assistant in Speech 4.

JANE L. SCHEUERMANN

Elizabeth, N. J.

Major in Biology; Class Vice-President 1; Heelers 1, 2, 3; Basketball 1, 2, 3, 4; Dean's List 1, 2, 3, 4; C. A. Social Commission 1, 2, 3; Carillon 1, 2, 3, 4; Modern Dance Club 2, 3, 4; W. A. A. Numerals 3; Ivy Day Committee 3; Student Staff 3; Proctor 4; Student Government, Senior Advisor 4; MIRROR Staff 4; Assistant in Biology 4; Christmas Hop Committee 4; Carnival Hop Committee 4.



PAUL D. SCHMANSKA

Putnam, Conn.

Major in Economics; Choir 2, 3; Outing Club Council 2; Outing Club Board 3; Proctor 3; Provisional Student Council 3; B. C. C. 3; Class President 4.



MARY H. SEABURY

Seymour, Conn.

Major in Sociology; C. A. Community Service Commission 1, 2, 3, 4; W. A. A. Numerals 3; B. A. S. C. 3; Proctor 4.





G. ALDEN SEARS

St. Johnsbury, Vermont

Major in Economics; Dean's List 1, 2, 3, 4; C. A. Public Affairs Commission 1; C. A. Reconstruction Commission 2; Co-Editor of B. C. Handbook 3; Student Council, Vice-President 4.



FAYE E. SHACKFORD

Auburn, Maine

Major in Sociology; Heelers 1, 2, 3, 4; Choir 1, 2; Lambda Alpha 1, 2, 3, 4; Robinson Players 4.



WINIFRED P. SHERMAN

Boothbay Harbor, Maine

Major in Latin; C. A. Community Service Commission 1, 2; C. A. Public Affairs Commission 3; W. A. A. Numerals 1, Junior Board 2, Junior Representative 3, President 4; Dance Band 2; Scholarship Prize 2, 3; Sodulitas Latina 2 3, Vice-President 4; Dean's List 2, 3, 4; House Council 3; Phi Sigma Iota 4; W. A. A. Basketball, Manager 3, Coach 4; Chairman, "Betty Bates" Committee 3.

RUTH E. SMALL

Framingham, Mass.

Major in History and Government; Heelers 1, 3. Program Chairman 4; C. A. Community Service Commission 1, 2; Campus Service Commission 3, 4; Proctor 3, 4; Politics Club 3; Robinson Players 4; Class Vice-President 4.



ANNE E. SMITH

Stratford, Conn.

Major in Sociology; B. C. A., Freshman Cabinet 1; W. A. A., Junior Board 2; C. A. Community Service Commission 2; W. A. A. Training 2, 3, 4; W. A. A. Senior Board 3; W. A. A. Numerals 3; Student, Advertising Manager 3, Business Manager 4; C. A. Social Commission Leader 4; Freshman Discussion Leader 4.



MARY F. STANLEY

West Hartford, Conn.

Major in English; C. A. Social Commission 1, 2; House Council 1; Dean's List 1; Heelers 2, 3; Robinson Players, Executive Board 4; Spofford Club 4; MIRROR Staff, Business Manager 4.





RUTH A. STILLMAN

Wareham, Mass.

Major in Biology; Outing Club Council 1, 2, Board of Directors 3, President 4; Freshman Debating Council 1; Debating Council 2, 3, Manager 4; W. A. A. Numerals 1; Dean's List 1, 2, 3, 4; Student Government 2; Proctor 3; W. A. A. Junior Board 3; Assistant in Biology 2, 3, 4; Delta Sigma Rho 3; W. A. A. Sweater 3; Freshman Orientation Commission 4; Carnival Queen 4; Jordan-Ramsdell Scientific Society 4.



DOROTHY D. STROUT

Auburn, Maine

Major in Biology; Debating 1; Campus Service Commission 1; Student Staff 1, 2; Debate Council 2, 3, President Debating Council 4; Sophomore Representative Lambda Alpha Council 2; Assistant Biology 2, 3, 4; Tea Dance Committee 2; Publishing Association 3, Vice-President 4; Lambda Alpha Council 3; Delta Sigma Rho 3, 4; Varsity Debates 3, 4; Speaker Ivy Day 3; Jordan-Ramsdell Scientific Society 3, 4; Chairman Lambda Alpha Tea Dance 3.



FRANCES R. SUDHALTER

West Newton, Mass.

Major in French; Choir 1, 2, 3, 4; Student Staff 1; Christmas Hop Committee 2; La Petite Academie 3, 4; Colby-Bates Concert 3; Dean's List 3; MIRROR Staff 4; Phi Sigma Iota 4; Commencement Day Committee 4; C. A. Social Commission 4; House Council 2.

JANICE H. SUNN

Springfield, Mass.

Major in Sociology; Community Service Commission 1, 2, 3; Training 1, 2; W. A. A. Numerals 2; W. A. A. Awards Committee 3; W. A. A. Sweater 3; Jordan-Ramsdell Society 3, 4; Basketball Coach 4.



JULIAN R. THOMPSON

Auburn, Maine

Major in English; Student Council 3; Baseball 1, 2, 3, 4; Skiing 1, 2, 3; Football 3.



WINIFRED E. THOMSEN

Port Chester, N. Y.

Major in Chemistry; C. A. Religion Commission 1, 2, 3; Laurance Chemical Society 2, 3, Secretary-Treasurer 4; Assistant in Chemistry 2, 3, 4; Dean's List 2.





MARY A. TIBBETTS

Auburn, Maine

Major in Biology; Lambda Alpha 1, 2, 3, 4; Jordan-Ramsdell Scientific Society 2, 3, 4; Assistant in Biology 3.



MURIEL G. ULRICH

Bloomfield, N. J.

Major in Sociology; Outing Club Junior Board 1, 2, 4; Outing Club Board of Directors 3; Class Vice-President 1, 2; C. A. Freshman Commission: Chairman 2, 3; Freshman Cabinet 1; Training 1, 2; W. A. A. Numerals 1; Modern Dance Club 1, 2, 3, 4; W. A. A. Archery Coach 2; Assistant: German 3; Ivy Day Committee 3; C. A. Vice-President 4, President 4; Freshman Discussion Group Leader 4; George Colby Chase Committee 4; Carnival Hop Committee 4.



MARY A. VANWYCK

Wilmington, Vt.

Major in Physics; Dean's List 1, 3; W. A. A. Summer Board Secretary 1; C. A. Campus Service Commission 1, 2, 3; W. A. A. Numerals 2, Sweater 3; Jordan-Ramsdell Scientific Society 2, 3, 4; Debating Council 2; House Council 2, 4, President 3; Student 2; Proctor 3; Student Government Board 3; C. A. Social Commission 4; Assistant in Physics 4; Ivy Day Committee 3.

BARBARA A. VARNEY

Lewiston, Maine

Major in Sociology; C. A. Reconstruction Commission 2, 3, 4; Lambda Alpha 1, 2, 3, 4, Vice-President 3; C. A. Social Commission 1; C. A. Freshman Cabinet 1; Student Board 1, 2; MacFarlane Club 2; W. A. A. Board 2, 3, 4; W. A. A. Archery Manager 2; Ivy Hop Committee 3; C. A. House Representative 3; W. A. Numerals 3; Outing Club Council 4; Commencement Committee 4; Heelers 4; C. A. Discussion Group Leader 4.



GERALDINE M. WEED

Laconia, N. H.



FRANCES L. WHEELER

Reading, Mass.

Major in Sociology and Economics; Debating 1, 2; C. A. Reconstruction Commission 1; Student 1, 2, 3, 4; Dean's List 1, 2, 3, 4; Sophomore Prize Debate; C. A. Deputations Commission 2, 3, 4; Choir 2; Politics Club 2, 3; Delta Sigma Rho 3; C. A. Secretary 3, 4; W. A. A. Numerals 3; Garnet 3; Debate Council, Secretary 4; Christian Service Club 4; Assistant in Sociology 4.

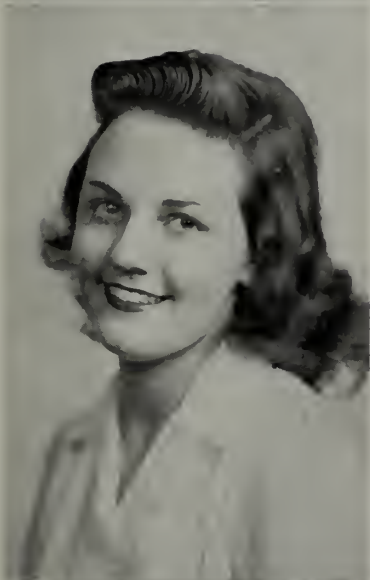




PRISCILLA S. WHITE

Providence, R. I.

Major in Sociology; C. A. Freshman Cabinet 1; Reconstruction Commission 1, 2, 3; Campus Service Commission 4; Student Staff 2; W. A. A. Numerals 3; Proctor 3; Heelers 4.



ELIZABETH WIDGER

Lynnfield, Mass.

Major in Sociology; C. A. Community Service Commission 1, 2, 3, 4; Dean's List 3, 4; Student Government Senior Advisor 4; Garnet Staff 4; Commencement Ticket Committee 4.



PATRICIA WILSON

Gorham, Maine

Major in Sociology; Dean's List 1, 2, 3; W. A. A. Numerals 2, Sweater 3; Student Government Board 3, President 4; Proctor 3, 4; Outing Club, Carnival Committee 3, 4; Bates Conference Committee 4; Class Treasurer 4; Carnival Queen's Court 4.

DAVID WOLYNSKI

New York, N. Y.

Major in History and Government; Freshman Debating Council 1; Lawrence Chemical Society 2, 3; Philosophy Club 3, 4; Current Events Committee 3; Politics Club 4; Dean's List 4.



CONSTANCE E. WOOD

Taunton, Mass.

Major in English; Campus Service Commission (C. A.) 1, 2; Community Service Commission (C. A.) 3; W. A. A. Numerals 2; Heelers 3, 4; MIRROR Board 3, 4; Student Government Board 4; B. A. S. C. 3; Proctor 4.

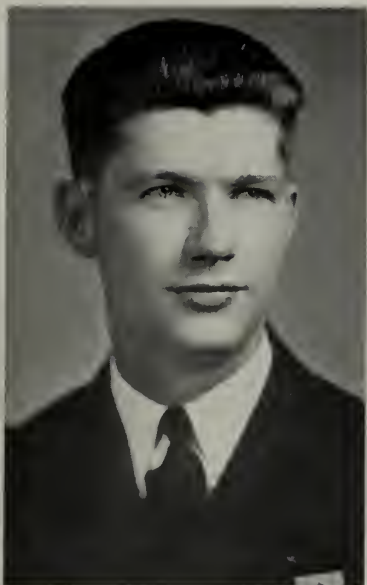


ELECTRA ZAZOPOULOS

Haverhill, Mass.

Major in History and Government; C. A. Freshman Cabinet 1; Reconstruction Commission 1, 2; Student Staff 1, 2; Managing Editor Student 3, 4; Philhellenic Club 1; Dean's List 2, 3; Politics Club 2, 3; Vice-President Philhellenic Club 2; Proctor 3, 4; C. A. Cabinet 3; Philosophy Club, Vice-Chairman; Assistant, History and Government 3, 4; Assistant, Philosophy 4; Bates Key Scholarship 4; Heelers, Chairman Properties Committee 4; Phi Beta Kappa.





PATRICK H. HARRINGTON

Fall River, Mass.

Major in Economics; Debating Council 1, 2, 3, 4. President Debating Council 3; Speakers Bureau 1, 2, 3, 4, Assistant in Speech 3; Assistant in Economics 3; Politics Club 2, 3.



MICHAEL G. TOULOUMTZIS

Roxbury, Mass.

Major in Biology; Football 1, 2, 3; Heelers 1, 2; Debating 1; Student Staff 1, 2, 3; Choir 1, 2, 3, 4; Phil-Hellenic Club 1.



AVRON PERSKY

Lewiston, Maine

Major in History and Government; Track 1.

Graduating with the Class of 1946

WAYNE JESSE GILMOUR

PAUL EDWARD MURPHY

First Row, left to right: J. Christie, B. Knight, D. Murphy, M. Mantarian, J. Pierce, J. McEnaney, G. Shaftoe, W. Kunkiewicz, C. Stone, W. Moulton, S. Keene, F. Disnard, R. Howarth, P. MacMackin, B. Cosgrove, G. Stewart, J. Gumpright, A. Thorpe, J. Hunt, B. Hall, H. Jobrack, J. Merritt, M. Sanborn, C. Stetson, C. Lane, S. Hicks, E. Frost, E. Jones, Mrs. Zerby and Son, Mrs. Myhrman, "Prexie," Mrs. Rowe, R. Swirsky, P. Clukey, M. Morang, G. Nickerson, M. Holden, G. Weed, B. Brown, D. Leavitt, B. Morse, M. Holmes, L. Lovely, R. Small, M. Myer, H. Hawkes, P. White, B. O'Connell, B. Kimble, B. Miller, C. Card, E. Prebble, D. Richter, *Second Row, left to right:* B. Dennet, Don, J. Cameron, W. Clason, L. Anderson, J. Zanni, W. Rosborough, S. Gray, M. Lategola, G. Rutledge, B. Hutchins, R. Asker, J. Armitage, T. Smith, R. Nickerson, J. Packard, W. Poole, J. Sunn, F. Howarth, C. Wood, M. Wilde, D. Strout, M. Brindley, V. Rice, G. Finelli, S. Davidson, B. Ginn, M. Ryon, M. Seabury, M. Hoyt, C. Patalano, J. Nelson, M. Bowles, L. Caterine, M. Lever, F. Dean, F. Wheeler, B. Stevens, P. Tilton, P. Donovan, R. Russell, J. Santri, C. Rawcliffe, N. Parisi, K. Murphy, P. Wilson, M. Ulrich, B. Varney, E. Duffett, F. Shackford, D. Wolynski, R. Bond.

Third Row, left to right: R. Cloutier, E. Fox, C. Walker, H. Lemont, D. James, G. Fleischer, R. Rudolf, R. Pope, E. Ireland, P. Guglietta, J. Dow, L. Balchunas, B. McColley, B. Lindh, H. Glabau, F. Farquhar, J. Klane, H. Clarkson, H. Schulman, J. Parsons, R. Petropulos, E. Rowe, G. Hall, M. Cloutier, R. Garland, M. Culbert, R. Zazopoulos, E. Zerby, Mrs. Wright, Dr. Zerby, Mr. Sutcliffe, Mr. Rowe, S. Adkins, Dr. Wright, Mrs. Curtis and Son, D. Lichter, B. Greenberg, H. MacMurray, B. Hibbard, N. Gould, M. Levine, D. Ramsdell, G. Zimberg, F. Murdoch, J. Styer, B. Landick, W. Lenk, T. Mendall, W. Cauty, J. Grimes, O. Rubin, B. Woodard, J. Graves, B. Schultz, M. Walther, M. Langille, P. Hemenway, R. Savage, P. Wake, A. Sears, J. Watts.

Fourth Row, left to right: D. Brigham, G. Ray, J. Freeman, E. Linscott, W. Thomsen, W. Meserve, B. Barr, P. Isaacson, B. Henderson, F. Robertson, P. Cumberland, M. Danielson, R. Burnette, E. Glanz, W. Hennessy, J. Keleher, O. Wise, W. Barrie, B. Auty, Mrs. Sutcliffe, W. Parker, A. Bray, R. Buker, Mr. Curtis, E. Widger, J. Milton, B. Hannigan, V. Lindquist, P. Stephens, B. Dearborn, A. Fish, P. Crane, A. St. Dennis, R. Stone, K. Lord, B. Corsa, M. Gross, B. Corish, B. Moore, M. Schaefer, D. Misuraca, F. Rolfe, B. Moulton, B. Scott, D. Malatesa, S. Schoenfeld, E. Noel, B. Perkins, D. Currier, D. Harriman, N. Morin, L. Tibery.



Photo by
Dora Clark Tamm

Stanton Ride

The Stanton Ride is a pleasant get-together for all freshman students held soon after the opening of college. It was instituted many years ago by a beloved professor, "Uncle Johnny" Stanton and is observed as nearly as possible along the original lines. Although the old "figure eight" trolley line was a thing of the past when the class of '46 had its outing—we are sure a good time was had by all.





*First Row
(left to right)*

William Hennessy
 Robert Dennett
 Joseph Dow
 Louis Caterine
 David Ramsdell
 Oscar Rubin
 Cyprien Martel, Jr.

Second Row

Howard Collins, Jr.
 Harry Jobrack
 Norman Card
 Herbert Knight
 Colby Walker, Jr.
 Robert Delano
 Edgar Noel

Third Row

Harrison Lemont
 William Perkins
 Roger Howard
 Robert Lindh
 Paul Cumberland
 Leslie Anderson

Fourth Row

Frank Sugeno
 Floyd Robertson, Jr.
 Walter Lenk
 Robert Cohan
 Richard Murphy
 Clifton Rawcliff
 Donald Richter

Fifth Row

Marjorie Albin
 Earle Fox
 Austin Fletcher, Jr.
 Raymond Bond
 Donald Harriman



Other Classes

OFFICERS

President
RAY HOBBS

Vice-President
MARCIA WILSON

Secretary
MILDRED MATEER

Treasurer
HELEN HOCHSTUHL

Juniors

JUNIOR MEN

Sixth Semester

Richard Lee Baldwin
Lawrence Derwood Carey
Joseph Coopersmith
Leland Cunningham Davis, Jr.
Lester Everett Davis, Jr.
Daniel Wilson Gibbs, Jr.
Robert Laurence Harris
Raymond Walden Hobbs
Fred Parker Hoy
Nahum Augustus Huston, Jr.
A. Sumuel Keller
Walter David Leavitt
Clarence Trafton Mendall
Frank Emerson Mullet
Jaan Pennar
Arthur Jay Ploener
Arthur Victor Rice, Jr.
Norman Joseph Temple
Edwin Wilson Tooker
Donald Vivian Tripp
Alfred Emerson Wade, Jr.

Fifth Semester

John Henry Ackerman
Robert Earle Adair
Lawrence Albert Arnold
Ernest Henry Bishop
Daniel Chase Boothliby

George Edward Curtis, Jr.
Russell Cummings Cutter
Howard Stanley Dion
Brenton Clinton Dodge
Irwin Donenfeld
John Raymond Dyer, Jr.
Richard Edward Flanagan
David Evander Haines
Vaughan Hathaway
Wallace Adolph Johnson
John Joseph Margarones
Walter Joseph Meserve, Jr.
Edward Alvan Penn
William Eugene Plaisted
Robert Eliot Smolker
Douglas Stage
Robert William Towse
Guy Nelson Turcotte
Joseph Alfred Vachon
Paul Monroe Weiner
Edward Raymond Wild

JUNIOR WOMEN

Sixth Semester

Doris Adams
Barbara Aldrich
Ruth Barba
Barbara Bartlett
Jane Blossom
Carolyn Booth
Charlotte Bridgham
Beverly Buck

Phyllis Burke
Camille Carlson
Nancy Clough
Arlene Crosson
Mary Jean Cutts
Dorothy Disbury
Jane Doty
June Duval
Marcia Dwinell
Janice Eyges
Lottie Fogel
Florence Furfey
Bernice Goldman
Charlotte Grant
Marjorie Harvey
Edith Hary
Joyce Hawkins
Muriel Henry
Mary Elizabeth Hill
Helen Hochstuhll
Josephine Ingram
Roxane Kammerer
Elinor Keith
Lila Kumpunen
Jean Labagh
Lorraine Loper
Joyce Lord
Mildred Mateer
Elizabeth May
Mary Meyer
Ruth Moulton
Ruth Olfene
Margaret Overton

Nancy Pearson
Janice Prince
Madeleine Richard
Jean Rosequist
Joyce Rudolph
Mary Skelton
Vesta Starrett
Barbara Stebbins
Elizabeth Stover
Jacqueline Thompson
Marjorie Tournier
Martha Wagner
Patricia Wakeman
Roberta Watson
Sally White
Marcia Wilson
Eleanor Wohn
Eloise Wood
Jo Ann Woodward

Fifth Semester

Charlotte Akers
Doris Beattie
Jane Cathcart
Phyllis Chaplowe
Arlyne Friend
Faith Jensen
Jean Patmore
Virginia Stoughton
Carol Thompson
Charlotte Welch

Sophomores

OFFICERS

President

DICK WOODCOCK

Vice-President

JOAN THOMPSON

Secretary

ELEANOR MILLS

Treasurer

MARJORIE LORENZ

SOPHOMORE MEN

Fourth Semester

Earle Wesley Albee, Jr.
Arthur Pratt Allen, Jr.
James Warren Balentine
Stephen James Bartlett
Wesley Irving Clason
James Anthony Cronin, Jr.
Keith Wayne Cunningham
Carlton Muzzy Davis
Walter Orrin Davis
Glenn Vincent Fleischer
John Gaffney
William Denton Ginn
Norbert Gould
Arthur Carl Hansen
Donald Milford Harriman
John Justin Hart
Theodore Grant Hunter, Jr.
Roland George Lamontagne
Michael Thomas Lategola
Royce William Miller
Charles Pendexter
Ronald Bruce Reicker
Francis Elisha Richards
Gordon Wells Shaftoe
Leighton Shields, Jr.
Lester Smith
Robert Baldwin Vail
Leonard Wilmot, Jr.
Richard Forrest Woodcock

Third Semester

Robert Sumner Alward
George Kenneth Baldwin

George Athan Billias
Everett Eugene Boothby
Donald Andrews Campbell
William Hassett Canty
Louis Caterine
Leonard Andrew Charpentier
Carl Crasnick
George Francis Disnard
Emery Willington Flavin
Earle Leon Fox
Henry Lester Gerry, Jr.
Edward Coleman Glanz
David Robert Green
Glen Robert Hansen
John Jacob Heckler
John Jones Houston
Allen Gordon Howlett
Frederick Ienello, Jr.
Dana Agnew James
Stanley Kawliche
William Francis Kelley
Oakes Merrill Kilgore
Donald Frederick Leary
Gordon Eric Lindenblad
John Warren Milton, Jr.
William D. Perkins
David Bailey Ramsdell
Byron Elmer Sabin
John Joseph Santry
Floyd Franklin Smiley, Jr.
Albert Bailey Sparks
Howard Richard Stickel, Jr.
Deane Milton Sturgis
Donald William Sutherland
Charles Harvey Warren
Mayer Gordon Weisman

SOPHOMORE WOMEN

Fourth Semester

Jeanne Anderson
Joyce Baldwin
Katherine Barbalias
Barbara Beattie
Doris Bickert
Jane Brackett
Frances Briggs
Pauline Chamberlain
Ruby Christison
Madelyn Clark
Jean Cromley
Marjorie Daggett
Helene Davis
Fern Dworkin
Mary Elizabeth East
Barbara Fienemann
Alma Finelli
Luella Flett
Judy Gleason
Mary Alice Golder
Phyllis Gordon
Jean Harrington
C. Ruth Hoffman
Jean Holden
Lillian Horne
Jean Kelso
Joan Knodell
Ruth Kohl
Betty Kragelund
Jean Leavitt
Marjorie Lorenz
Marjorie McKeand
Elizabeth Maby

Jeanne Mather
Hazel Millard
Elinor Mills
J. Joy Moffatt
Jean Moller
Ruth Murphy
Isabel Planeta
Nancy Prouty
Irene Provencher
Priscilla Ribero
Vivienne Sikora
Phyllis Simon
Rella Sinnamon
Anna Smith
Phyllis Smith
Dorothea Snyder
Clara Ellen Stover
Joyce Streeter
Roberta Sweetser
Joan Thompson
Dorothy Tillson
Shirley Travis
Marion Walch
Genevieve Wallace
Elizabeth Whittaker
Marjorie Willard
Lois Youngs
Sylvia Zimmerman

Third Semester

Elaine Gray
Patricia Raymond
Janet Soban
Alice Tatosian
Elizabeth Williams

Freshmen

President
ARTHUR BRADBURY

Vice-President
FRANK STRINGFELLOW

Secretary
ANN LAWTON

Treasurer
EDITH ROUTIER

FRESHMAN MEN

Second Semester

Wesley D. Baker
Leo Edward Begin
Francis Roland Berry
Arthur Badger Bradbury
Richard Maurice Briggs
Louis Caouette
Daniel Jonathan Carmen
Charles Chakoumakos
Paul Mann Chase
Frederick Lincoln Chenery, III
Carleton Howard Clement
Rinaldo Jackson Colby
Theodore Amos Coshnear
Kenneth Gerald Crosby
Irving Charles Davis
Dan Theodore Decker
John Thomas Driscoll
Robert Newton Evans, Jr.
Sumner Steven Feinberg
Joel Merrill Fisk
Timothy Francis Ginther
Robert Wallace Gumb
Richard Edwin Harriman
Thomas Joseph Hennessy, Jr.
Nelson Otis Horne
Roger Alvan Howard
William Lawrence Jiler
Robert Leo Jones
Calvin Walker Jordan
Norman Franklin Jordan
Ryozo Glenn Kumekawa
Philip Joseph LaRochelle
Robert Warren Larrabee
Louis Levine
Charles Edwin MacArthur
Romeo Joseph Mikailonis
Stanley Everett Moody
Chester Wells Morss
Frank Gray Murdock
Richard Harrington Murphy
Lewis Paul Newton
John Franklin Radebaugh, Jr.
George Daniel Reale

Clifford Tennis Reil, Jr.
George Gorham Rowan, Jr.
John Lowry Russell, Jr.
William Sakamota
Bernard Joseph Silva
Kenneth Morton Smith
Walter Frederick Sorenson
Leonard Matthias Stone
Frank William Stringfellow
Robert Randall Strong
Robert Millet Swift
Richard Edward Thomson
David Stanley Tillson
Everett Leroy Tuttle
Robert Louis Vachon
Frank Leslie Walker, Jr.
Richard Watherspoon Wallis
Donald Brown Webber
Harvard Frederick Weston, Jr.
Harry Oliver Williams, Jr.
Robert Clinton Williams
Eugene Sumner Zelch

First Semester

George Ferguson Allen
Arthur Elwin Baird
Lionel Gerald Barbin
Tristram Barnard
Sumner Paul Barr
John Francis Barry
Arthur Hilaire Blanchard, Jr.
Leo Paul Bouffard, Jr.
Calvin Woodrow Brown
Ian Gibb Buchanan
James Edward Burney
Jesse Eustace Castanias
Frank Gerald Chapman
Robert Reed Chatigny
Charles Coit Colburn
Donald Bernard Connors
Shepard Norton Cortell
William James Cunnane
Allan VanVoorhees Davis
Augustine Davis
James Mark DeCoste
Joseph William DeMarco

Daniel Joseph Desjardins
Hugh James Dinwoodie
James Francis Facos
Myles Joseph Ferrick, Jr.
Kenneth Finlayson
Robert Carl Gall
John Joseph Geswell
Harris Lee Goldman
David Webster Goodwin
Phillips Nason Gordon
Stanley Bass Hall
Burton Gowen Hammond
James Harvey Heller
Edward Robinson Hill, Jr.
Stanley Norman Hodsdon
Ellsworth Trefry Johnson
Frank Walter Johnson
Emory Stafford Johnston
Richard Warriston Johnston
John Karayanis
Owen Joseph Kittredge
Herman Francis Krackenberger
Spiro Gregory Lano
Edward Walter Lonergan
John Emmel McCarthy
John Ramey McCune
William Barry Marshall
Vincent Stephen Michniewich
Lewis Lee Millett
Donald Newton
John Arthur Palmer
Norman Albert Parent
Robert Duane Ramsdell
Charles Frederick Repkie
James Potter Richey
William Frederick Rutter
Donald James Ryder
Ralph Edgar Schultz
Leonard Seaman
Kelson Charles Seward
Ernest Morrith Shea
Neal Smith
James Warren Stevenson
John Joseph Sullivan
William Brooks Swasey
Ralph Lewis Sylvester
John Walter Taylor

Waldo Edward Tibbetts
Orwell Charles Tousley
Nicholas Valoras
Donald Everett Wilson

FRESHMAN WOMEN

Second Semester

Jane Appell
Barbara Badgley
Dorothea Baker
Judith Barenberg
Priscilla Bartlett
Jean Bassette
Marilyn Bayer
Elma Beach
Shirley Bean
Sonya Bianchi
Marilyn Bisland
M. June Blanchard
Clara Blodgett
Gwendolyn Bodington
Arlene Bourne
Janice Bowie
Margaret Brewster
Joan Brinkman
Mary Jane Brown
Joan Buffington
Kathryn Burdon
Joyce Cargill
Dorothea Carr
Betty Cederholm
Dorothy Chase
Minnie Chiotinos
Eugenia Cierpial
Dorothy Collins
Anna Condos
Barbara Cooper
Ruth Copes
Elizabeth Cosier
Barbara Cottle
June Cunningham
Joanne Currier
Eleanor Daley
Maralyn Davis
Nancy Dean
Laura De Marco
Marilyn Deston

Barbara De Young	Doris Hingel	Shirley Mann	Dorothy Siess
Jane Diefendorf	Marjorie Hobart	Janet Mellor	Ann Small
Marion Dodge	Carolyn Hobbs	Gloria Michels	Elaine Smith
Mary Louise Duda	Elaine Hubbard	Barbara Middleton	Esta Smith
Barbara Duemmling	Audrey Hudson	Marion Millett	Thelma Smith
Elizabeth Dyer	Nancy Hudson	Lois Montgomery	Patricia Snell
Deborah Eager	June Ingalls	Gayle Morgan	Muriel Snow
Shirley Eames	Marion Ingraham	Barbara Muir	Sondra Speer
Rachel Eastman	Lois Javier	Janice Myers	Constance Stanley
Carolyn Egger	Carol Jenkinson	Florence Nagano	Gwendolyn Staveley
Arlene Fazzi	Nancy Jepson	Marian Norwood	Priscilla Steele
Serine Ferrigno	Nancy Johnson	Beatrice O'Brien	Emilie Stehli
Arlene Finch	Enid Jones	Helen Odegaard	Dorothy Stetson
Mary Fisher	Marjorie Jones	Emina Paladino	Margaret Stewart
Lois Foster	Jacqueline Jordan	Helen Papaioanou	Rita Stuart
Lydia Fox	Priscilla Jordan	Ruth Patten	Eugenia Sullivan
Marylou Fredricks	Dolores Kapes	Shirley Pease	Birgit Svane
Mary Galt	Edith Katz	Patricia Peel	Arline Sweet
Nancy Gannon	Virginia Kay	Marjorie Peltz	Winifred Sweet
Phyllis Garland	Kathleen Kelly	Anne Peterson	Ina Laverne Tate
Dorothy Gaylord	Jacquelyn Keyes	Carol Peterson	Jean Thompson
Mary Gibbs	Laura Kempton	Elaine Porter	Athena Tikelis
Jeanne Gillespie	Doris Kinney	Bette-Jeanne Pump	Lorna Tilton
Marian Goddard	Jeanne Klein	Mary Ramsey	Helen Tucker
Donna Golder	Jean Knox	Helen Rankin	Arlene Tufts
Sally Gove	Eleanor Kraupner	Verna Re	Theresa Vassar
Joan Greenberg	Evelyn Kushner	Mary Reeves	Veronica Vogelsanger
Margaret Hamlin	Claire Lapham	Ingeborg Reibling	Beatrice Wascoe
Alice Hammond	Lucille LaPlant	Valjean Ripley	Marian Jane Waters
Ruth Hancock	Ellen Larson	Kathryn Robish	Phyllis Webber
Ann Harlow	Lucille LaSalle	Marjorie Rodman	Alice Weber
Betty Harrigan	Ann Lawton	Lucy Roth	May Whitelaw
Janice Harris	Marjorie Lemka	Edith Routier	June Wiley
Marjorie Harthan	Alfreda Lesniewski	Ann Sargent	Joanne Williams
Elaine Harvey	Geraldine Lincoln	Ethel Schmidt	LaVerne Williams
Arlene Haughn	Helen Lockhart	Carolyn Schneider	Delight Wolfe
Judith Hawkins	Isabelle McBride	Elizabeth Schoenherr	Barbara Woods
Arrolyn Hayes	Lois McEnaney	Marion Schwartz	Nancy Wray
Lois Hefferman	Barbara Mallett	Rita Shea	Beverly Young
C. Barbara Hennessy	Barbara Mason	Barbara Sherry	Jane Zimmerman

Special Students

Clarence John Chaffers
 Reginald Edgar Fournier
 Coleman Philip Gorham
 Francis Ross Kelly
 William Howard Needham
 Edward Loud Poland
 Winthrop Ellsworth Robinson
 Robert Gage Simpson

Five-Year Nursing Course Students at the Hospital

Lillian Lovely
 Jean Cheney
 Alice Gerrish
 Jeanne Gregory
 Edith Skolfield



Activities
AND ATHLETICS



First Row, left to right: David Brigham, *Co-Advertising Manager*; Mary Stanley, *Business Manager*; Suzanne Davidson, *Editor-in-Chief*; Jane Scheuermann, *Club Photography*; Alfred Wade, *Advertising Assistant*. Second Row, left to right: Eleanor Wohn, *Co-Advertising Manager*; Sally A. Adkins, *Literary Advisor*; Constance Wood, *Servicemen Correspondent*; Helen Hochstuhl, *Assistant Servicemen Correspondent*; Frances Sudhalter, *Senior Photography*. Missing: Jane Gumpright.

SUZANNE DAVIDSON

Editor-in-Chief

MARY STANLEY

Business Manager

DAVID BRIGHAM

Associate Editor

FRANCES SUDHALTER

Associate Business Manager

ASSISTANT EDITORS

Helen Hochstuhl

Constance Wood

Jane Gumpright

Sally Ann Adkins

ASSISTANT BUSINESS MANAGERS

Eleanor Wohn

Jane Scheuermann

Alfred Wade

THE MIRROR STAFF



First Row, left to right: M. Stewart, J. Gumpright, P. Wilson, President; M. Richard, R. Asker. Second Row, left to right: J. Scheuermann, E. Hary, E. Rowe, M. Wilson, C. Bridgham, J. Blossom. Third Row, left to right: C. Wood, F. Dworkin, B. Widger, L. Kumpunen, J. Labagh. Missing: J. Ingram, J. Baldwin.

The Women's Student Government has had an added responsibility in this year of change at Bates. The division in campus living and the enlarged enrollment of freshmen women has meant that the Association must be, more than ever, a strong, active, and well-unified group.

It has been faced with many problems resulting from post-war situations reflected in campus life and has taken initiative in establishing new precedents for their adjustment. Close cooperation with the administration and faculty resulted in harmonious relations with all factions on the Bates campus, and a purposeful, efficient organization.

By sponsoring Sunday afternoon teas, where the women had opportunities to meet faculty members in a social atmosphere; by holding the annual formal banquet, and by conducting the tea dance, the Student Government Association carried out its aims to develop widespread responsibility in each individual, and to offer to each girl the greatest possibilities of college life.

The Association has achieved these ideals through the ever-efficient functioning of the Honor System, a unique instrument of Student Government, and one of which the student body is justly proud. The Honor System covers all phases of campus life, and is a challenge to individual responsibility. Its success at Bates has been the envy of many other institutions.

The board this year has continued with progressive spirit in coordination with the principles of reconstruction and revision of the world community by successful administration in the Bates community. We realize that the accomplishment of these goals has been achieved only to the extent that each girl has felt herself to be a working part of the Association, by accepting her individual responsibility, and by entering fully into the democratic spirit of true Student Government.

STUDENT GOVERNMENT



First Row, left to right: R. Reicker, D. Brigham, A. Sears. Second Row, left to right: J. Driscoll, R. Hobbs, R. Alward. Missing: H. Inouye, R. Smith.

The Student Council is the men's administrative organization representing as a committee all male students on campus. By weekly meetings and occasional discussions with the college administration it attempts to formulate plans and policies in accordance with popular will and the general aims of the college. Direct contact between the women's Student Government and the administration is made possible through Council representation on the Bates Conference Committee. To further coordinate its activity with other areas of campus life the Council is represented on the Freshman Orientation Committee and at the athletic office.

During the past two years since the number of men on campus has been very small the Council was allowed to lapse. However, a voice in campus government was retained through representation on B. C. C. Last fall with the return to campus of a large number of men the Council was again activated. As a large majority of these were returning from the services, equal representation was given to each semester group temporarily supplanting the established system which gave majority representation to the upper classes.

The main activities of the Council at the present include supervision of college elections in conjunction with Stu G, organization of cheer leading and Red Cross drives, holding Chase Hall Tournaments and campus mayoralty campaigns, and with all matters pertaining to the interests of the male portion of the student body. In addition working through its representative at the athletic office an intra-mural sports program is carried on.

This year the chief efforts of the council have been devoted to revitalizing campus spirit and life. In this connection it planted the seeds for the revival of an Off Campus Men's Club and the Varsity Club, and helped to organize a Freshman Minstrel. The Council has, also, been attempting to assume nearly all of its pre-war policies, modifying these to suit present day needs, and hopes to have them in effect as soon as possible. As campus life becomes more stable, its activities will expand till further—the Council becoming once more an organizing force in the men's campus life.

The success of the Council depends directly on the student body which it represents. With the increased importance of democracy today, the Council looks to a bright future.

STUDENT COUNCIL



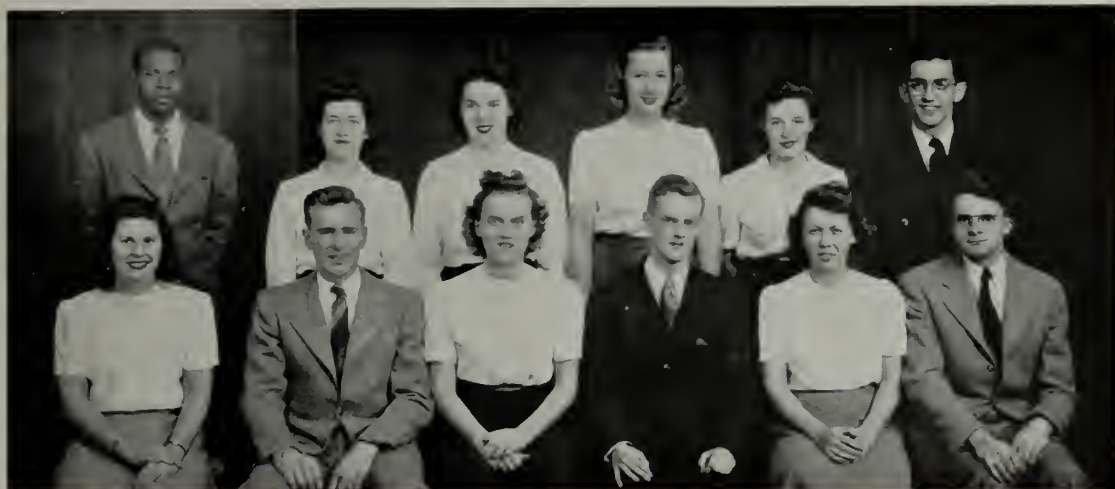
*First Row, left to right: Dr. Zerby, N. Ross, Dean Clark, President Phillips, H. Rowe, M. Schaeffer, D. Brigham.
Second Row, left to right: R. Asker, H. Inouye, M. Stewart, R. Reicker, P. Wilson.*

The Bates Conference Committee under the leadership of President Phillips, has swung through its second year of action. It is composed of an efficient working group taken from the faculty, the administration, and the students. The student representatives are the presidents of Student Government and Student Council, respectively, and two elected members from each governing board.

The committee is concerned with promoting harmonious relationships between faculty and students to the advantage of both and to work out solutions to any campus problems by redirecting the problems into the proper channels or by dealing with them directly. It is an over-all representative group which, in its very organization, has the power to carry out immediately any of its decisions.

The problems this year have presented a variety of issues. They included dispensing with meal tickets in the dining room, withdrawing Bates from the listing in the commercialized magazine *Who's Who in American Colleges*, sponsoring new Bates traditions, creating a student music committee to provide more chapel music, conducting the campus Red Cross Drive, coordinating the various activities committees by reorganizing them and by putting the Chase Hall Committee on a permanent basis. These are but a few of the more important problems discussed and solved. However, such things as food shortages, smoking rooms, reserve book shortage, and dump piles were not ignored in the discussions and were solved as far as possible. Therefore we see that B. C. C. is an inclusive administrative committee. Through it the students can have much to say about the policies and spirit of Bates. Let's use it!!

BATES CONFERENCE COMMITTEE



First Row, left to right: S. Davidson, W. Ginn, M. Ulrich, Vice-President; R. Smith, F. Wheeler, R. Hobbs. Second Row, left to right: T. Hunter, S. Hicks, C. Hawkes, L. Youngs, M. Henry, R. Towse. Missing: G. Hiebert, D. Nevotny, M. Dwinell, A. Smith.

There are a great many people on campus who do not realize what a varied program Bates Christian Association is offering the campus. There are nine different commissions, each one carrying on its own work in its sphere.

The Social Commission, under the leadership of Anne Smith, has had a very active year putting on tea in the Union, exam cocoas, June Day breakfast, planning the CA banquet, and providing Sunday music in the dining hall. Raymond Hobbs, chairman of Freshmen Commission, led his group in various Freshmen Week activities such as meeting trains and buses, providing information tent, IMUR party, the planned Stanton Ride that had to be cancelled because of the weather, sponsoring Freshmen Orientation Discussion Groups and entertaining sub-freshmen throughout the year.

Community Service Commission with Marcia Dwinell, has for its program getting Sunday School teachers for surrounding churches, volunteer hospital work, entertaining at the old ladies' home and many other things. Of the many things that Campus Service Commission, under Shirley Hicks, has done, there are a few. They have run the CA Secondhand Book Store, put up Christmas lights on campus, provided ice cream and magazines in infirmaries and sent birthday cards to faculty.

Public Affairs Commission has tried to keep pertinent issues of the nation before the campus. William Ginn, leader, and his group conducted a week's campaign on military peacetime conscription ending the week with a campus poll. They also have brought speakers on labor to the campus. The program that Muriel Henry and Ted Hunter have set up for Reconstruction Commission includes WSSF Drive, and the study groups on UNO in professors' homes. At their meetings they have had many good speakers.

Religion Commission, with Charlotte Hawkes as head, has made possible the Sunday evening Vesper Services, inter-faith discussions, and helped with Religious Emphasis Week. Deputations Commission sends out teams to nearby churches to conduct socials and services. This is headed by Bob Towse. Suzanne Davidson, head of Publicity Commission, and her group have publicized the different projects of CA by various methods of fliers and posters, and student contact.

The CA Cabinet, which meets each Wednesday night, is made up of the leaders of these nine commissions, the President of Freshmen Cabinet and the executive board, with Dr. Zerby and Mr. Seward as advisors. The executive board of 1945 and 1946 was Gordon Hiebert, who has since gone into the service, as president; Muriel Ulrich as vice-president and now acting as president; Frances Wheeler as secretary; Bob Smith as treasurer; and William Ginn, acting vice-president. This committee coordinates the many activities of the Christian Association.

This glimpse of the work of BCA shows a picture of the varied program offered, the opportunities for Bates students to express themselves in worthwhile activity.

CHRISTIAN ASSOCIATION



First Row, left to right: Dr. Carlson, F. Dean, H. Inouye, President; D. Stout, R. Barba. Second Row, left to right: Prof. Wilkins, W. Beaupre. Missing: Prof. Whitbeck

As a consolidating and policy approving organization, the Publishing Association brings unity to the three distinct college publications, the *MIRROR*, *Student* and *Garnet*. Back in March 1925 the Board of Directors had their first official meeting, and during the successive years have seen the life and death of the *Bobcat*, a humor magazine, and the *Buffoon*, whose title clarifies its contents. The *Garnet* was made part of its charge when it had grown sufficiently to achieve independence through indirect efforts of the *Student* and the Spofford Club. In 1932 the *MIRROR* was given supervision by P. A. and the revised 1940 constitution now clearly defines P. A.'s duties to these three campus publications.

Although all pupils who subscribe to the *Student* are members of the Publishing Association, the actual business is carried on by a Board of Directors. Three faculty members as supervisors are appointed by the president, and this year were Dr. Carlson, Professor Whitbeck, and Professor Wilkins, treasurer. The five student members are chosen at the all-college elections in the spring and consist of a president, vice-president, and secretary from the incoming senior class, and a men's and women's representative from the incoming junior class.

THE PUBLISHING ASSOCIATION



*First Row, left to right: R. Moulton, J. Kelso, M. Van Wyck, W. Sherman, B. Carter, B. East, H. Hochstuhl.
Second Row, left to right: E. Gray, C. Carlson, J. Cleland, R. Kammerer, B. Varney, L. Davis, P. Gordon, D. Tillson.*

The Women's Athletic Association has three main areas of activity—its special projects, its sports, and its training program.

We began our series of activities for nineteen forty-five and six with a welcoming party for the incoming freshman girls during Freshman Week. The large group was skillfully directed by Barbara Varney and Miss Durfee in "get-acquainted" games, square dancing, and singing.

Following the Freshman "Rec" came our Training Rally in November. As chairman, Barbara Carter made the rally one of the most original and effective we have ever seen. We feel that we have a valuable training program, and that many of the girls at Bates consider it an integral part of their daily lives. This program may perhaps be one of pioneering. Other colleges have become interested and appreciate its merits. We hope they will find it as successful as we have at Bates. To a newcomer, this program may sound somewhat difficult but a little will power often solves any problems. The decision is up to the individual. As an incentive to others may we say that we have taken it and had lots of fun doing it.

Other projects of the year were the Mid-Year Cocoas, Betty Bates Day, Hare and Hound Chase, Thorncrag Outing, and June Day Breakfast.

As usual we offered a wide variety of sports including hiking, volleyball, modern dancing, swimming, badminton, basketball, batball, archery, hockey, baseball, skiing, skating, bowling, tennis, and a ping pong tournament.

Presentation of awards is another interesting part of our activities. Careful consideration is taken in deciding upon worthy recipients of these awards. White sweaters are given to those juniors and seniors who have shown good sportsmanship, ability, interest and participation in W. A. A. activities. A silver loving cup may be awarded to a senior who has shown outstanding sportsmanship, athletic ability, leadership and general attitude.

Our board tries to work as an integrated whole, with each and every member knowing what the work of every other member and that of the board as a whole is. In this way every member is more vitally and constructively interested in the work of the organization. Our goal is to enrich the recreational lives of as many girls as possible through our sports and projects. By means of a representative in each dorm we keep every girl on campus up to date on what we are offering, what we have done, are doing, and plan to do in the future.

WOMEN'S ATHLETIC ASSOCIATION



First Row, left to right: R. Petropulos, P. Donovan, R. Sweetser, E. Rowe, E. May, D. Strout, S. White. Second Row, left to right: S. Bean, L. Hefferman, I. Provencher, C. Grant, R. Watson, L. Fogel, D. Golder, M. A. Golder. Third Row, left to right: M. Norwood, L. Loper, M. Snow, A. Sweet, B. Bartlett, J. Hawkins, W. Sweet. Fourth Row, left to right: J. Thompson, B. Buck, R. Eastman, A. Small, A. Tufts. Missing: D. Petrie, F. Shackford, M. Hoyt, R. Isaacson, M. Tibbetts, B. Varney, E. Wood, K. Barbalias, F. Briggs, P. Durgin, R. Murphy, V. Fortin, A. Hammond, B. O'Brien, B. Sherry, D. Stetson.

The Lambda Alpha Society of Bates is an organization made up of the women students who live off campus. Most of the girls come from Lewiston and Auburn hence the name Lambda Alpha. In their pleasant lounging rooms in Hathorn they study, hold weekly council meetings, and occasional parties. Each town girl is affiliated with one of the girls' dorms in order that they may take part in some of the campus parties and also so they may have a "home" on campus.

The girls elect their officers at the time of the all-college elections each spring. The president, a member of the senior class, becomes a member of Student Government. For this year Erma Rowe was the president. Betty May, a junior, was vice-president. Roberta Sweetser, a sophomore, was secretary. The Council is composed of these three officers: Patricia Conavan, senior; Roberta Watson, junior; Francis Briggs, sophomore; and Alice Hammond and Rachel Eastman, representing the freshmen. In their weekly meetings they follow the same procedure as the house meetings of the dorms.

The first Thursday of every month they have a supper meeting at the Women's Union. A committee of girls cook and serve the meal. After this a mass business meeting is held. Women faculty members and faculty wives are asked as guests. Some form of social program is put on by the girls. These are really parties in every sense of the word and the girls enjoy the fun of preparing the supper, serving it and furnishing entertainment for their own members.

Each year at Christmas we hold a party in our rooms in Hathorn with every town girl bringing a dorm girl as her guest. There is always a big tree, a strangely familiar looking Santa Claus and a joke present for everyone. The week before school begins in the fall a cabin party is held at Thornerag in honor of the incoming freshmen. This way the "frosh" become acquainted with the famous Thornerag hot dogs, cider, and doughnuts.

For the first time, Greek-lettered pins have been ordered for Lambda Alpha.

Each year Lambda Alpha sponsors an all-college function such as the very successful tea dance. It certainly is fun working in this "town girls' unit," and we hope future members will find it the same.

LAMBDA ALPHA

STUDENT

First Row, left to right: J. Prince, J. Rosequist, E. Zazapoulos, M. Holden, Editor; G. Finelli, A. Smith, N. Gannon, R. Moulton. Second Row, left to right: S. Hicks, J. Baldwin, A. Carter, E. Williams, E. Wahn, J. Blossom, J. Nelson, M. Henry. Third Row, left to right: M. Overton, C. Carlson, N. Wray, M. Harvey, H. Pratt, J. Klane, B. Hill. Fourth Row, left to right: D. Stetson, A. Smith, B. Cosgrove, R. Kohl, J. Moller, E. Routier. Missing: F. Furlley, A. Thelis, S. A. Gove, J. Cathcart, B. Varney, T. Vassar, D. Tillson, G. Sandulli, M. Davis, B. Cooper, B. Hutchins.



GARNET



First Row, left to right: B. Widger, S. Adkins, L. Kumpunen, Editor; K. Reilly, B. Chandler. Second Row, left to right: R. Barba, J. Heckler, N. Pearson. Missing: D. Petrie, E. Hary, L. Smith, R. Ravenol.

SPOFFORD CLUB

First Row, left to right: M. Stanley, G. Nickerson, S. Adkins, L. Kumpunen, President; R. Barba, K. Reilly, B. Chandler. Second Row, left to right: B. Aldrich, R. Moulton, C. Hamlin, D. Cobb, C. Booth, L. Whittaker. Third Row, left to right: E. Wahn, E. Williams. Missing: F. Furlley, D. Petrie, D. Nevotny, J. Gumpright, V. Sikora.



COLLEGE CHOIR



First Row, left to right: J. Chatiigny, M. Meyer, P. Wakeman, M. Langille, F. Sudhalter, M. Skelton, M. Wagner, M. Davis, C. Davis. *Second Row, left to right:* R. Thomson, M. Hamlin, L. Hefferman, S. Gove, B. Young, E. Daley, B. Mason, E. Stehli, J. Williams, L. Wilmont. *Third Row, left to right:* E. Beach, E. Jones, D. Chase, N. Johnson, A. Peterson, M. Bisland, D. Stetson, G. Michels, J. Baldwin. *Fourth Row, left to right:* W. Sawyers, R. Miller, B. Dodge, C. MacArthur, R. Alward, F. Chenery, D. Leary, R. Smith. *Fifth Row, left to right:* M. Dodge, A. Tufts, F. Jensen, J. Gillespie, E. Cosier, J. Cutts, D. Kinney, A. Crosson.

ORPHIC SOCIETY



First Row, left to right: E. Hubbard, R. Smith, E. Dyer, C. Davis, R. Woodland, B. Dodge, M. Davis. *Second Row, left to right:* F. Dean, H. Santos, C. Stover, N. Dodge, N. Harthan, W. Sawyers. *Third Row, left to right:* J. Mather, A. Tiklis, E. Whittaker, L. Tate, J. Cutts. *Fourth Row, left to right:* B. East, J. Thompson, L. Youngs, A. Crosson.

Mac FARLANE CLUB



First Row, left to right: T. Hunter, B. East, E. Raab, R. Smith, *President:* E. Frost, J. Mather, D. Leary. *Second Row, left to right:* L. Hefferman, M. Gibbs, D. Snyder, A. Crosson, C. Davis, M. Harthan, N. Hudson, J. Baldwin. *Third Row, left to right:* H. Tucker, M. Wagner, J. Woodward, B. Mason, L. Youngs, E. Routier, R. Cinnamon, E. Dyer. *Missing:* J. Ballentine, P. Jordan, M. Norwood, G. Michels, G. Rowan, D. Sleath, G. Nickerson, E. Wood, J. Cromley, J. Thompson, E. Stone, M. Dwinell. *Secretary-Treasurer:* M. Stewart. *Vice-President:* E. Maby, J. Patmore, F. Dean.

DEBATING COUNCIL



First Row, left to right: A. Golder, J. Harrington, R. Stillman, D. Strout, President; F. Wheeler, B. Miller, M. Ingraham. Second Row, left to right: L. Montgomery, R. Alward, D. Brigham, W. Ginn, R. Williams, N. Clough. Third Row, left to right: W. Stringfellow, L. Kumpunen, M. Richards, J. Blossom.

POLITICS CLUB



First Row, left to right: S. Davidson, J. Packard, R. Isaacson, P. Hoy, P. Donovan, S. Hicks, H. Pratt. Second Row, left to right: N. Pearson, D. Tripp, M. Richards, L. Shields, M. Wagner, G. Jacques, B. Goldman. Missing: A. Carter, L. Davis, L. Flett, J. Gleason, E. Keith, D. Lichter, B. O'Connell, J. Parsons, R. Rudolph, E. Stover, A. Wade, D. Wolynski, E. Zazopoulos.

PHI SIGMA IOTA



First Row, left to right: W. Sherman, J. Cleland, Prof. Kimball, Prof. Seward, M. Langille. Second Row, left to right: J. Duval, M. Henry, M. Boucher, M. Meyer, F. Sudhalter. Third Row, left to right: J. Gumprecht, Prof. Bertocci, M. Dwinell.

SOLDIER'S WIFE

Muriel Stewart
and
Preston Abbott



ROBINSON PLAYERS



First Row, left to right: F. Shackford, M. Ryon, Miss Schaeffer, M. Stanley, R. Small. Second Row, left to right: M. Wilson, J. Woodward, B. Aldrich, V. Starrett, J. Doty.

AS YOU LIKE IT



Left to Right:
Vivienne Sikora, Barbara Varney, Florence Furfey

ROBINSON PLAYERS

PYGMALION



Left to Right:
Ruth Moulton, Trafton Mendall, Joyce Lord, June Duval

LA PETITE ACADEMIE



First Row, left to right: J. Duval, M. Langille, M. Meyer, M. Henry. Second Row, left to right: M. Daggett, M. Boucher, F. Sudhalter. Missing: J. Hawkins, J. Ingram, G. Jacques, F. Briggs, Prof Bertocci

CLASSICS CLUB



First Row, left to right: V. O'Brien, Miss Carlson, R. Christ son. Second Row, left to right: G. Wallace, W. Sherman, R. Petropulos. Missing: B. Morse, F. Briggs, B. Dodge, R. Barbalias.

LAWRANCE CHEMICAL SOCIETY



First Row, left to right: P. Tilton, Dr. W. Thomas, W. Thomsen, Dr. W. Lawrance, B. Miller, H. Inouye, C. Lane. Second Row, left to right: C. Carlson, Dr. F. Mabee, J. Moore, R. Daniels, J. Rosequist.

W. A. A. LETTERWOMEN

First Row, left to right: J. Cleland, W. Sherman, M. Van Wyck, R. Asker, P. Wilson. Second Row, left to right: J. Nelson, V. Rice, R. Stillman, P. MacMackin, J. Sunn, B. Carter. Missing: J. Packard.



JORDAN - RAMSDELL SCIENTIFIC SOCIETY



First Row, left to right: E. Rowe, M. Van Wyck, Dr. K. Woodcock, J. Nelson, D. Leavitt, Dr. W. Sawyer, M. Meyer, L. Fogel. Second Row, left to right: D. Strout, R. Stillman, E. May, P. MacMackin, B. Carter, E. Morse, P. Chaplowe. Third Row, left to right: R. Woodcock, F. Jensen, J. Cole, C. Welch, P. Abbott, B. Buck. Missing: C. Finnegan, A. Genetti, J. Larochele, J. Sunn, M. Tibbetts.

CARILLON

Frist Row, left to right: J. Williams, A. Crosson, R. Asker, Director; J. Mather, C. Hawkes. Second Row, left to right: J. Scheuermann, M. Skelton, J. Woodward, F. Jensen, M. Clark, E. Daley. Missing: J. Patmore, M. Wilson.



MODERN DANCE CLUB



First Row, left to right: J. Scheuermann, H. Hochstuhl, B. Chandler, E. Rowe, E. Wohn, Secretary-Treasurer. Second Row, left to right: M. Wilson, M. Cloutier, E. Frost, President; R. Asker, M. Ulrich, E. Whittaker. Missing: V. Sikora, R. Barba.

W. A. A. COACHES



First Row, left to right: J. Brackett, W. Sherman, M. Van Wyck, J. Thompson. Second Row, left to right: B. Fiene-mann, J. Sunn, J. Prince, N. Savard, J. Packard.

SPORTS REVIEW



First Row, left to right: M. Van Wyck, M. Ulrich, J. Sunn, A. Smith, M. Wilson, R. Moulton, J. Knox, P. Wilson, A. Crosson, M. Golder.

OUTING CLUB DIRECTORS



First Row, left to right: E. Durfee, R. Stillman, President; P. MacMackin, Dr. Sawyer. Second Row, left to right: V. Rice, R. Gumb, R. Bailey, R. Woodcock, F. Dean. Missing: J. Cutts, W. Sawyer, D. Decker.

OUTING CLUB

OUTING CLUB COUNCIL



First Row, left to right: F. Dean, B. Durfee, C. Carlson, R. Stillman, President; P. Wilson, Dr. Sawyer, B. Varney. Second Row, left to right: E. Mills, R. Gumb, P. Wakeman, R. Woodcock, V. Rice, R. Hobbs, M. Wilson, R. Bailey. Third Row, left to right: J. Packard, M. Ulrich, B. Carter, L. Whittaker, J. Prince, L. Youngs, P. MacMackin. Missing: J. Cutts, W. Sawyers, D. Decker, D. Brigham, H. Inouye, J. Baldwin, E. Hary, B. Beattie, M. Lorenz, A. Kneeland, P. Abbott, F. Disnard, G. Fleischer, A. Bradbury, W. Baker, R. Stone.

TENNIS



Left to right: Coach Mansfield, Horne, Vail, Haines, Woodcock, Strong, Heckler, Weismam, Reicher, Billias, Stevenson.

BASEBALL

First Row, left to right: Arnold, Keller, Levine, Davis, Thompson, Hervey, Josselyn, LaRochelle, Card, Mullett. Second Row, left to right: Coach Pond, Levine, Gould, Sutherland, Goldman, Burney, Boothby, Cunnane, Geswell, Parent, Coshnear, Blanchard, Gennetti, Manager.

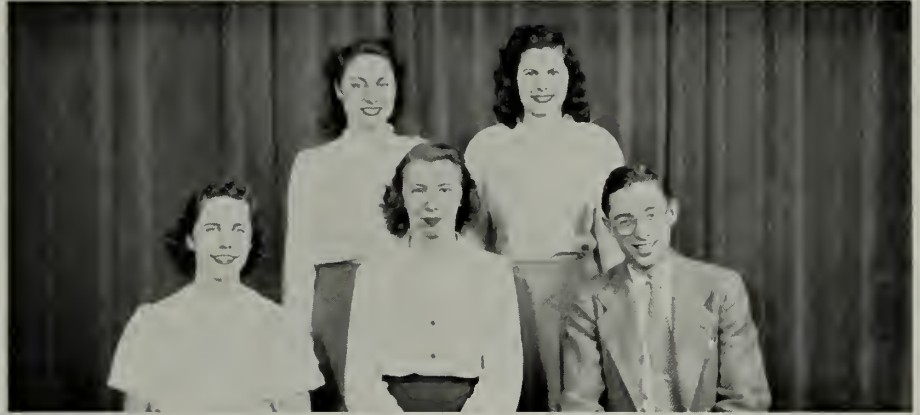


TRACK



First Row, left to right: Murphy, Weiner, Clason, Santry, Sturgis, Disnard, Dyer, DeMarco, Tenello, Howarth, Dodge. Second Row, left to right: Coach Thompson, Horne, Swift, Howard, Mikailonis, Rutter, Fisk, Manager; Karayianis, Swasey, Wilson, Palmer, Thomson, Crosby, Assistant Manager.

CHASE HALL COMMITTEE



First Row, left to right: F. Dean, C. Carlson, Chairman; L. Shields. Second Row, left to right: E. Wahn, S. Davidson. Third Row, left to right: F. Missing: F. Disnard, A. Bradbury, D. Johnson.

HOUSE VICE - PRESIDENTS



First Row, left to right: C. Carlson, J. Scheuermann, R. Small, M. Seabury, E. Zazopoulos. Second Row, left to right: J. Doty, M. Henry, N. Clough, F. Jensen, B. May, R. Moulton, R. Barba.

HEELERS

First Row, left to right: C. Wood, F. Shackford, B. O'Connell, J. Gumprecht, M. Ryon, M. Stanley, E. Zazopoulos, R. Small. Second Row, left to right: M. Galt, R. Kammerer, J. Woodward, J. Patmore, B. Aldrich, B. Varnay, V. Starrett, M. Daggett. Third Row, left to right: V. Sikora, R. Kohl, J. Klein, E. Keith, M. Wilson, S. Buffington, M. Meyer, Miss Schaeffer. Fourth Row, left to right: J. Keyes, P. Gordon, J. Doty, M. Clark, J. Harrington, M. Smith. Fifth Row, left to right: B. de Young, L. Foster, J. Lord, M. Mateer, G. Finelli, M. Harvey.

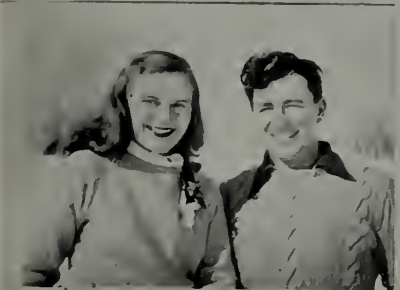


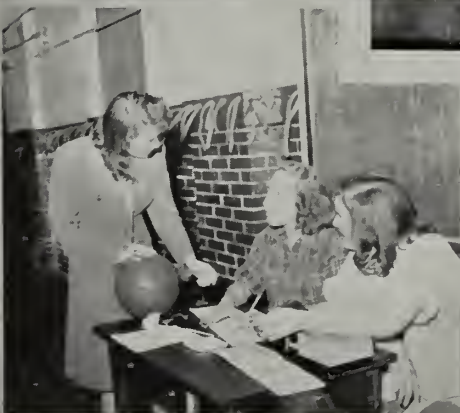


Features









Advertising

Compliments of
THE CLASS OF 1946

Compliments of
THE CLASS OF 1947

Compliments of
THE CLASS OF 1948

Compliments of
THE CLASS OF 1949

Dora Clark Tash

ONE TWENTY-FIVE MAIN STREET
LEWISTON, MAINE



*Official Photographer to
the 1946 MIRROR
of Bates College*

*“For more than Sixty-five years —
Stobbs Press Craftsmen have produced fine printing.”*

Stobbs

THE *Stobbs* PRESS

Printers of “The 1946 Mirror”

Worcester 8, Massachusetts



Compliments

Sears, Roebuck and Co.

212 MAIN STREET

LEWISTON

MAINE

TEL. 5100

PECK'S

FOR 66 YEARS PECK'S HAS GROWN
WITH BATES AND LEWISTON

During all those years Peck's has been a living exponent
of the theory that there is no economy without quality.—
Peck's and quality are synonymous.

Merchandise of Merit Since 1880

EXCLUSIVE

Invisible Marking

Phone 29

Judkins Laundry

INC.

FRED H. TUFTS

President

G. ROYAL TUFTS

Vice-President

GEORGE W. TUFTS

Manager and Treasurer



Inquire for Campus Agent

Reid & Hughes

Students' favorite store for their college needs. Sweaters and skirts for campus wear. Bates bedspreads and curtains for an attractive background to Undergraduate life.

Whatever your needs try

REID AND HUGHES

H. P. HOOD & SONS

— Inc. —

DAIRY EXPERTS

ICE CREAM MILK and CREAM

Auburn, Maine

HOTEL DEWITT

"The Friendly Hotel"

LEWISTON

MAINE

A Modern Fireproof Hotel
European Plan

Good Food and Courteous Service
in our

Crystal Dining Room and Lounge.

Upholding Maine's Tradition for Hospitality
and Fine Food.

Excellent facilities for Reunions, Banquets,

Dances, Meetings and Conventions.

Garage in Connection Ample Parking Space

Telephone 4200

ALLEN J. BROWNE, *Manager*

WCOU

1240

Kes.

On Your Dial



LEWISTON, MAINE

TWIN-CITY PRINTERY

14 Lisbon St. Lewiston, Me.

LETTER PRESS—LITHOGRAPHY

RULING—BINDING—DESIGN

LAYOUT

Phone 420

ATHERTON'S

HEADQUARTERS

FOR

"QUALITY-TESTED"

HOME

FURNISHINGS

ATHERTON'S

Pine and Lisbon Streets

Lewiston

Maine

THERE

is Nothing Complicated
about a Bank Account.

Just Come in as You
Would Enter Any Other
Place of Business.

WALK IN



Lewiston Trust Co.

Lewiston, Maine

Compliments of
A. H. Benoit & Co.

CLOTHING FOR MEN

162 Lisbon Street Lewiston, Me.

for

FLOWERS

**ROAK'S
FLORIST**

Auburn Theatre Bldg.

Compliments of

TUFTS BROTHERS

FRED H. TUFTS G. ROYAL TUFTS

PRINTING SPECIALISTS



Rubber Stamp Manufacturers

193 Middle St. Lewiston, Me.

Telephone 1710

Walton's Bakery Products are best
because always Uniform, Fresh
and Dependable

SOLD BY ALL INDEPENDENT
GROCERS

WALTON'S BAKERY

Auburn, Maine



Compliments of

*Purity Restaurant
and
Sandwich Shop*

Lewiston's Air-Conditioned

Restaurant



197 Main Street Telephone 570

Compliments of
**C. L. PRINCE
AND SONS**

*Dealers in Boots, Shoes
and Rubbers*

26-30 Bates St. Lewiston, Me.

Compliments of
EXCEL CLEANERS

HOTEL LITTLETON

100 Main Street

Telephone 3880

STEPHEN POLLEYS, *Mgr.*

WARD'S
WARD BROS.

SMART THINGS TO WEAR

72 Lisbon Street

WINDOW SHADES VENETIAN BLINDS

J. K. CAMPBELL

UPHOLSTERING DRAPERIES

New Home Furnishings

Tel. 3172-W

37 Sabattus St. Lewiston, Me.

WOODWORTH'S

HAROLD COOPER, *Prop.*

Bicycle Shop—Machine Shop

Movie Film Rentals

26 Main St. Lewiston, Me.

MILLIKEN TOMLINSON CO.

WHOLESALE GROCERS

11-15 Lincoln St. Lewiston, Me.

ANDERSON & BRIGGS, INC.

Phone 4820

PRESCRIPTION DRUGGISTS

Cor. Court and Main Streets

Auburn, Maine

FOGG'S LEATHER STORE

QUALITY LUGGAGE

123 Main Street
Lewiston, Maine

Compliments of

RIDLEY'S LAUNDRY

Good work—Good service—
Fair prices
Tel. 1629-W

23 Bridge St. Lewiston

Compliments of

PLAZA GRILL

Main Street Lewiston, Me.

To the Class of 1946, congratulations and best wishes for success.

To the Classes of '47, '48, '49, may we express the hope that we will serve you in the future as we have served Bates students in the past.

ANN'S FLOWER SHOP

Distinctive flowers and corsages
for all occasions

Tel. 827

40 ASH STREET Opp. Postoffice



79 Lisbon St. Lewiston, Me.

Compliments of

W. T. GRANT CO.

"Known for Value"

113 Lisbon St. Lewiston, Me.

Tel. 4757-M Hats Remodeled

ZELIA ROBIE ROY

Millinery of Distinction

173 Lisbon St. Lewiston, Me.

Compliments of

BOSTON TEA STORE

Est. 1875

S. S. WOODBURY, Prop.

*Fancy Groceries and
Confectionery*

249 Main St. Telephone 570

FRANK'S

"Store for Men"

Frank Features Sportswear

205 Main St. Opp. Strand Lewiston

ROSS' ICE CREAM



"Where the College Congregates"

Compliments of

FRANGEDAKIS RESTAURANT

SODA FOUNTAIN

Booth Service Modern Air-Conditioned

165 Main Street Lewiston

Sterling by Towle, Gorham, Lunt, Wallace
and Reed-Barton

Prize Cups—Clocks—Fountain Pens
Bill Folds

Expert Watch Repairing

BARNSTONE-OSGOOD

JEWELERS

150 Lisbon Street Lewiston

Compliments of

**THE BATES
COLLEGE STORE**

Compliments of

**BOSTON SHOE
STORE**

90 Lisbon Street

Lewiston, Maine

**SENER, GIROUX,
CANIFF & CO.**

168-174 Lisbon Street

Lewiston, Maine

The Store for Everybody

R. W. CLARK

DRUG STORE

Where Quality Counts

243 Main St.

Lewiston

Compliments of

**MARY'S CANDY
SHOP**

Main Street Lewiston

NORRIS-HAYDEN

LAUNDRY

QUALITY WORK

IMMEDIATE SERVICE

Auburn Mechanic's Row

Courtesy Quality Service

You've tried the rest
now
try the best

SAM'S

ITALIAN SANDWICHES

268 Main St. Lewiston, Me.
Tel. 83325

Dine and Dance

JOY INN

American-Chinese Restaurant
All kinds of Chop Suey to take out

Telephone 1643
20 Lisbon St. Lewiston, Me.

DAY'S

JEWELERS OPTICIANS

84 Lisbon Street

Stores at

LEWISTON BANGOR
PORTLAND WATERVILLE
BIDDEFORD

CRONIN AND ROOT

"SELL GOOD CLOTHES"
for Men and Young Men



127 Lisbon St. Lewiston

BERRY PAPER CO.

Your Stationer

School Supplies . . . Leather Goods
Dennison Goods

49 Lisbon Street Lewiston

Compliments of

**LINCOLN STORES,
INC.**

"Known for Values"

100 Lisbon Street
Lewiston, Maine

Compliments of

**HALL & KNIGHT
HARDWARE CO.**

“Maine’s Newest Hardware Store”

20 Chapel Street Lewiston

We wish to thank the Class of 1946 for its generous patronage and wish its members true success in their chosen fields.

QUALITY SHOP



143 College Street

Compliments of

**WILLS & HICKS
JEWELERS**

94 Court Street Auburn

Tel. 1432-W

COMPLIMENTS

OF

A

FRIEND

Compliments of

NICHOLS TEA ROOM

162 Lisbon St. Lewiston, Me.

Telephone 474-W

**BATES STREET CIGAR
AND
CONFECTIONERY CO.**

Wholesalers of
Cigars, Tobacco, Cigarettes and Confectionery,
Schrafft’s Chocolates, Murray’s Syrups
and Fruits, Coca-Cola

12-14 Bates St. Lewiston, Me.

Telephone 3120

Garments Altered, Cleaned, Pressed,
Repaired.

Furs Remodeled and Repaired

**THE NATIONAL
TAILOR**

Suits to Order for Men and Women

Telephone 1358 J

268 Main Street Lewiston, Maine

KEEP

YOUR

WAR

BONDS



LAVA
CHILE

1911